

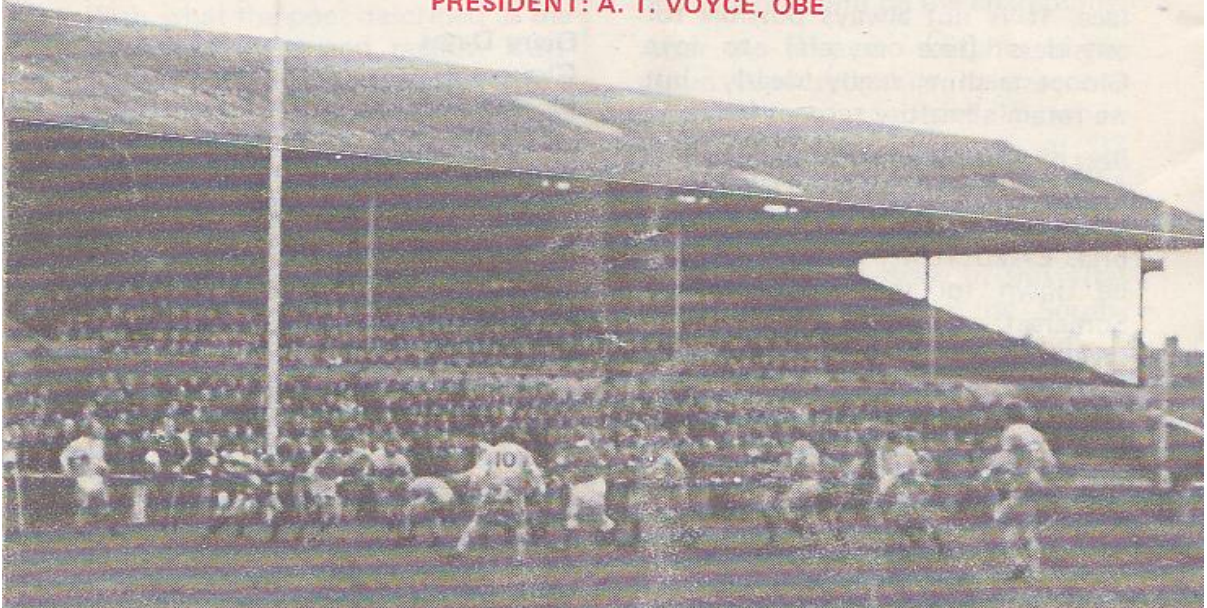
504



GLOUCESTER RUGBY FOOTBALL CLUB

Founded 1873

PRESIDENT: A. T. VOYCE, OBE



GLOUCESTER

V

SOUTH WALES POLICE

WEDNESDAY, 27th OCTOBER, 1976

at

KINGSHOLM — GLOUCESTER

Kick-off: 7.00 p.m.

Official Programme—6p



NORMAN P. PARTRIDGE (INSURANCE BROKERS) LTD.

1 BARTON STREET (corner of Clarence Street) GLOUCESTER
Telephone: 32088 and 34920

Free Advice
on all
Insurances

GLOUCESTER

Cherry and White

- Full Back
15. R. Etheridge *
- Three Quarters
14. R. J. Clewes *
13. D. Pointon *
12. R. Jardine *
11. R. R. Mogg *§
- Half Backs
10. C. G. Williams *†
9. P. Kingston *†
- Forwards
1. G. A. F. Sargent *
2. F. C. Reed *
3. P. J. Blakeway *§
4. A. Brinn *†
5. S. B. Boyle *§
6. J. A. Watkins (Capt.) *†
8. E. A. Pinkney *
7. J. H. Haines *
- REPLACEMENTS
L. Jones (Back)
S. G. Mills (Forward) *

Referee: P. RICHMOND (Somerset Society)

- † International
- § Under-23 International
- * County
- || England Trial

First XV Fixtures

1976

Sept. 4 (S) Broughton Pk. H	31- 6
8 (W) Stroud ... H	23- 3
11 (S) Coventry ... A	12-11
15 (W) Newbridge ... H	18-13
16 (S) Waterloo ... H	14-10
25 (S) Bristol ... H	6- 9
29 (W) Cheltenham A	62- 7

Oct. 2 (S) Bedford ... H 35-14 |

6 (W) Ebbw Vale ... A 4-22 |

9 (S) Harlequins ... H 9-14 |

13 (W) Pontypool ... A 18- 0 |

16 (S) Newport ... A 4-30 |

22 (F) Clifton ... H 28- 0 |

27 (W)S. Wales Police H — |

30 (S) Oxford Univ. A — |

Nov. 3 (W) Bridgend ... H — |

6 (S) Leicester ... H — |

10 (W) Cambridge Univ H — |

13 (S) Stroud ... A — |

20 (S) Aberavon ... H — |

27 (S) London Irish A — |

Dec. 4 (S) Moseley ... H — |

11 (S) Bath ... A — |

18 (S) Coventry ... H — |

26 Lydney ... H — |

(Boxing Day)

First XV Fixtures

1977

Jan. 1 (S) London Scott. H	—
8 (S) Leicester ... A	—
15 (S) Wasps ... A	—
19 (W) Army ... H	—
22 (S) Moseley ... A	—
26 (W) St. Lukes Coll. H	—
29 (S) Loughborough H	—

Feb. 4 (F) Bristol ... A — |

12 (S) Bath ... H — |

18 (F) Swansea ... A — |

25 (S) Aberavon ... A — |

Mar. 2 (W) Newport ... H — |

5 (S) Northampton H — |

9 (W) Cheltenham H — |

12 (S) Richmond ... A — |

16 (W) Abertillery ... H — |

19 (S) Guys Hospital H — |

26 (S) Saracens ... A — |

30 (S) Newbridge ... A — |

Apr. 2 (S) Cardiff ... H — |

7 (T) Lydney ... A — |

9 (S) New Brighton H — |

(Easter Saturday)

11 (M) Fylde ... H — |

(Easter Monday)

16 (S) Sale ... H — |

19 (T) Nottingham A — |

23 (S) Exeter ... A — |

30 (S) Plymouth ... H — |

The First-Aid Service on this ground is provided voluntarily by
The City of Gloucester Division, St. John Ambulance Brigade

SOUTH WALES POLICE

Blue and White

- Full Back
15. M. Pengilly
- Three Quarters
14. C. Thomas
13. M. Youlden
12. D. Barwood
11. H. Morgan
- Half Backs
10. D. Edwards
9. P. Noble
- Forwards
1. A. N. Other
2. D. Young
3. G. Lloyd
4. P. Prygodzicz
5. K. James
6. G. Williams
8. P. Harding (Capt.)
7. T. Tinnuche
- REPLACEMENTS
J. Jenkins
T. Stephenson



WESTGATE motorhouse

DAIMLER * JAGUAR * ROVER * TRIUMPH

Telephone: 34581





WELCOME TO SOUTH WALES POLICE

With what the poet described as the season of mists and mellow fruitfulness indeed upon us we extend a cordial welcome this evening to old friends from over the Bridge in South Wales Police, whose ranks include several names of distinction.

We can well do without the mists, but should be assured of mellow fruitfulness on the field of play if the matches in recent seasons are any guide, for they have generally provided constructive rugby and high scores.

Last year, on Wednesday, September 10, the Cherry and Whites ran out winners by 25 - 10, while the previous season, on April 16, also an evening game, another exciting game brought victory for Gloucester by a similar margin, 28 - 9.

We look forward, then, to an entertaining tussle with the lads from the Principality this evening.



KINGSHOLM KACKLE

Group Decider

With Gloucestershire and Somerset, as expected, both winning their county championship matches last Saturday, the scene is set for the meeting of the two counties at

Kingsholm on Saturday, November 13, for what will now be the vital match to decide the title in the South-West Group.

It must be remembered that this season there can be no "play-offs". Should two or more counties finish with the same number of points, the side with the better record of points scored will be the champions.

After the first two matches in the group Gloucestershire have scored 57 points and conceded 15, while Somerset's record stands at 33 points for and 16 against. It is obvious therefore that if Gloucestershire only succeed in holding their neighbours to a draw in this vital clash they would be the South-West group champions yet again . . .

. . . But supporters will expect something more decisive than that and no doubt a large crowd will be giving the champions vociferous encouragement against a Somerset side that is far better equipped than for many years.



Best of Both Worlds

Nico Craven, that prolific writer of books, whose passions evolve around Gloucestershire cricket and rugby, excels himself in his latest literary achievement, *Best of Both Worlds*.

A Gloucestershire exile living in Cumbria, he regularly makes the long journey down the M6 and M5 motorways to watch his beloved county on the cricket and rugby fields, following them, if possible even further to Lord's or Twickenham.

His latest book, price £2.25, is privately published, contains a foreword by radio and television personality Peter West, who says of the Kingsholm rugby supporters, "They have a more intimate knowledge of rugby football than any other in England, although there are times when better judgement is not allowed to cloud their public face. It is not always possible for outsiders [like myself] to love Gloucestershire rugby dearly, but we retain a healthy respect for it."

Best of Both Worlds can be obtained from the author at The Coach House, Ponsonby, Seascale, Cumbria, CA20 1BX . . . but Nico will be down for the Gloucestershire Somerset match, of course, with several friends, and has already booked his seat in the stand — in Row "G for Gloucestershire", as he always calls it.



Diary Dates

Gloucester travel to Iffley Road to meet Oxford University on Saturday when the United are at Kingsholm, with Ebbw Vale Athletic as their visitors.

But next Wednesday, November 3, the senior side have another home fixture, with Bridgend, always popular visitors, as their opponents. Kick-off as usual is 7.00 p.m., and this will be an Anglo-Welsh "league" match.

Arthur Russell



FOR ALL YOUR PROPERTY REQUIREMENTS

Roy Long & Partners

House, Land and Estate Agents

22 Worcester Street, Gloucester

Telephone: 0452-35962/3

PERSONAL SERVICE ASSURED