

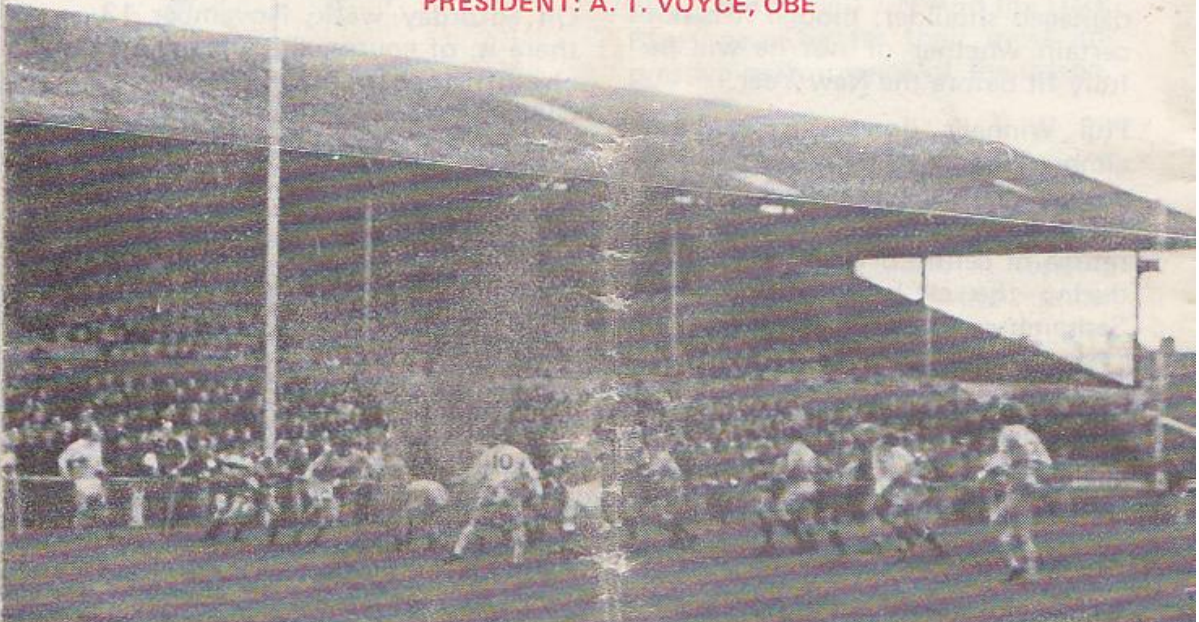


828

**GLOUCESTER RUGBY FOOTBALL CLUB**

Founded 1873

PRESIDENT: A. T. VOYCE, OBE



# GLOUCESTER

V

# BRIDGEND

WEDNESDAY, 3rd NOVEMBER, 1976

at

KINGSHOLM . GLOUCESTER

Kick-off: 7.00 p.m.

*Official Programme—6p*





# NORMAN P. PARTRIDGE (INSURANCE BROKERS) LTD.

1 BARTON STREET (corner of Clarence Street) GLOUCESTER  
Telephone: 32088 and 34920

Free Advice  
on all  
Insurances

## GLOUCESTER

Cherry and White

- Full Back  
15. **R. Etheridge**
- Three Quarters  
14. **R. J. Clewes** \*  
13. **D. Pointon**  
12. **R. Light**  
11. **R. R. Mogg** \*
- Half Backs  
10. **C. C. Williams** \*†  
9. **P. Kingston** \*†
- Forwards  
1. **K. Richardson** \*||  
2. **S. G. F. Mills**  
3. **M. A. Burton** \*†  
4. **A. Brinn** \*†  
5. **S. B. Boyle** \*§  
6. **J. A. Watkins (Capt.)** \*†  
8. **J. F. Simonet**  
7. **J. H. Haines** \*

### REPLACEMENTS

L. Jones  
F. C. Reed \*

Referee: A. R. GIBBS (Warwickshire Society)

† International

§ Under-23 International

\* County

|| England Trial

### First XV Fixtures

1976	
Sept. 4 (S) Broughton Pk. H	31-6
8 (W) Stroud ... H	23-3
11 (S) Coventry ... A	12-11
15 (W) Newbridge ... H	18-13
18 (S) Waterloo ... H	14-10
25 (S) Bristol ... H	6-9
29 (W) Cheltenham A	62-7
Oct. 2 (S) Bedford ... H 35-14	
6 (W) Ebbw Vale ... A	4-22
9 (S) Harlequins ... H	9-14
13 (W) Pontypool ... A	18-0
16 (S) Newport ... A	4-30
22 (F) Clifton ... H	28-0
27 (W) S. Wales Police H	
30 (S) Oxford Univ. A	
Nov. 3 (W) Bridgend ... H -	
6 (S) Leicester ... H -	
10 (W) Cambridge Univ H -	
13 (S) Stroud ... A -	
20 (S) Aberavon ... H -	
27 (S) London Irish A -	
Dec. 4 (S) Moseley ... H -	
11 (S) Bath ... A -	
18 (S) Coventry ... H -	
26 Lydney ... H -	
(Boxing Day)	

### First XV Fixtures

1977	
Jan. 1 (S) London Scott. H -	
8 (S) Leicester ... A -	
15 (S) Wasps ... A -	
19 (W) Army ... H -	
22 (S) Moseley ... A -	
26 (W) St. Lukes Coll. H -	
29 (S) Loughborough H -	
Feb. 4 (F) Bristol ... A -	
12 (S) Bath ... H -	
18 (F) Swansea ... A -	
26 (S) Aberavon ... A -	
Mar. 2 (W) Newport ... H -	
5 (S) Northampton H -	
9 (W) Cheltenham H -	
12 (S) Richmond ... A -	
16 (W) Abertillery ... H -	
19 (S) Guys Hospital H -	
26 (S) Saracens ... A -	
30 (S) Newbridge ... A -	
Apr. 2 (S) Cardiff ... H -	
7 (T) Lydney ... A -	
9 (S) New Brighton H -	
(Easter Saturday)	
11 (M) Fylde ... H -	
(Easter Monday)	
16 (S) Sale ... H -	
19 (T) Nottingham A -	
23 (S) Exeter ... A -	
30 (S) Plymouth ... H -	

The First-Aid Service on this ground is provided voluntarily by  
The City of Gloucester Division, St. John Ambulance Brigade

## BRIDGEND

Blue and White

- Full Back  
15. **J. Rowe**
- Three Quarters  
14. **N. Edwards**  
13. **S. P. Fennick (Capt.)** †  
12. **M. Triggs**  
11. **F. Owen**
- Half Backs  
10. **I. Lewis**  
9. **Gerald Williams**
- Forwards  
1. **E. Stephens**  
2. **G. Davies**  
3. **M. Jaynes**  
4. **L. Davies**  
5. **S. Dando**  
6. **D. Brain**  
8. **Gareth Williams**  
7. **G. Jones**

### REPLACEMENTS



## WESTGATE motorhouse

DAIMLER \* JAGUAR \* ROVER \* TRIUMPH

Telephone: 34581







## WELCOME TO THE BREWERY FIELD BOYS

A very cordial welcome this evening to Bridgend, the boys from the Brewery Field, who unfortunately only visit Kingsholm once every two years.

But their last two visits here have provided considerable food for thought and no little speculation among our supporters, for Bridgend have been one of the few teams to lower Gloucester's colours at home.

Last season's match at the Brewery Field was cancelled because of the state of the ground, but two years ago — their last appearance at Kingsholm — on December 28, 1974, Bridgend captured Gloucester's ground record with a sparkling display which brought them victory by 18 points to 15.

And two years previous to that the Welsh lads also inflicted upon the Cherry and Whites one of their rare home defeats, by 14 points to 6, on New Year's Day, 1973.

A game with Bridgend never lacks personalities nor intriguing moments, and Gloucester will be desperately keen to avenge those two home defeats. With our Welsh friends' reputation for speedy and constructive rugby, then, we look forward this evening to another entertaining tussle.

## KINGSHOLM KACKLE

### Splendid Win

The glut of penalty goals tended to minimise the lads' achievement in beating Oxford University at Iffley Road last Saturday, but the quality of rucker played met with the approval of friend and foe alike. After all, as Hamlet said, "The play's the thing . . ." And the Dark Blues gave by far their most impressive performance of the season.

### Another Record?

Supporters are already wondering if Gloucester can this season surpass even their remarkable accomplishments of recent years in topping their current record of the number of tries scored — 172, which they achieved last season.

Prior to this evening's match the Cherry and Whites have 49 tries to their credit, nine more than at this stage last season, and the top scorer is the effervescent Richard Mogg, who augmented his potential by proving his value as a place-kicker with the two late long range penalty goals against the Dark Blues.



### 300 Club

The first monthly draw of the *300 Club* will take place in the Social Club on Friday, November 26, at 9 p.m. Aleck Lankester and his committee are delighted to announce that membership is complete, so anyone now wishing to join, but have, to quote Ophelia, "trodden the primrose path of dalliance," appears to have left it too late.



### **Injured Players**

News of the injured players is reassuring. Peter Butler, whose badly pulled thigh muscles have kept him *hors de combat* for nearly two months, has started training again and hopes to be playing again within two weeks. Also limbering up is lock forward "Big John" Fidler, suffering from a badly-damaged shoulder, though it is not certain whether or not he will be fully fit before the New Year.

Phil Winnel's dorsal strains have almost disappeared and he will be vying for his place back in the senior side very shortly. But the return of centre Brian Vine, injured during the clash with Bristol in September, is still uncertain.

Meanwhile, supporters will no doubt give the proverbial "big hand" to Bob Light, formerly of Matson and Cheltenham, who is due to make his debut at centre this evening for the senior side. He has not played for the Town this season because of injury and joined Gloucester a few weeks ago.

### **Rich Fare Ahead**

There is rich fare in plenty for all rugby supporters at Kingsholm this month. Saturday brings the visit of Leicester, the famous "Tigers", with the usual 3.00 p.m. kick-off, then next Wednesday, November 10, the lads take on the successful Cambridge University for an evening game (7.00 p.m. kick-off).

On Saturday week, November 13, there is, of course, the vital county championship match between Gloucestershire and Somerset which will be the decider for the South-West group title. Then, on the following day comes the "plum" fixture with the All-Star team which includes several top players in the world of rugby. Admission is by programme only, 50p, and these are now on sale at the office or the Social Club.

Arthur Russell



*FOR ALL YOUR PROPERTY REQUIREMENTS*

## **Roy Long & Partners**

**House, Land and Estate Agents**

22 Worcester Street, Gloucester

Telephone: 0452-35962/3

*PERSONAL SERVICE ASSURED*