

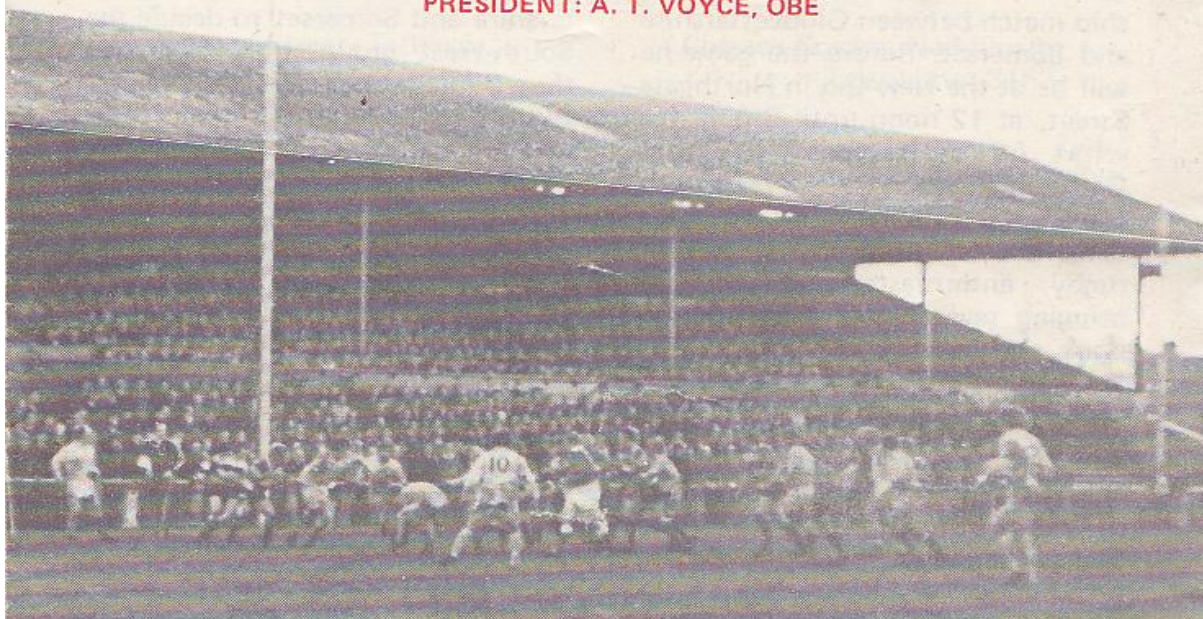


377

GLOUCESTER RUGBY FOOTBALL CLUB

Founded 1873

PRESIDENT: A. T. VOYCE, OBE



GLOUCESTER

V

LEICESTER

SATURDAY, 6th NOVEMBER, 1976

at

KINGSHOLM . GLOUCESTER

Kick-off: 3.00 p.m.

Official Programme—6p



NORMAN P. PARTRIDGE (INSURANCE BROKERS) LTD.

1 BARTON STREET (corner of Clarence Street) GLOUCESTER
Telephone: 32088 and 34920

Free Advice
on all
Insurances

GLOUCESTER

Cherry and White

- Full Back
15. **R. Etheridge** *
- Three Quarters
14. **R. J. Clewes** *
13. **D. Pinton** *
12. **R. Light** *
11. **R. R. Mogg** *S
- Half Backs
10. **C. G. Williams** *†
9. **P. Kingston** *†
- Forwards
1. **K. Richardson** *||
2. **S. G. F. Mills** *
3. **M. A. Burton** *†
4. **A. Brinn** *†
5. **S. B. Boyle** *
6. **J. A. Watkins (Capt.)** *†
8. **J. F. Simonett** *
7. **J. H. Haines** *

REPLACEMENTS

J. F. Herniman

Referee: A. A. WELSBY (Manchester Society)

- † International
S Under-23 International
* County
|| England Trial

First XV Fixtures

1976				
Sept. 4 (S) Broughton Pk.	H	31-6		
8 (W) Stroud	...	H 23-3		
11 (S) Coventry	...	A 12-11		
15 (W) Newbridge	...	H 18-13		
18 (S) Waterloo	...	H 14-10		
25 (S) Bristol	...	H 6-9		
29 (W) Cheltenham	A	62-7		
Oct. 2 (S) Bedford			...	H 35-14
6 (W) Ebbw Vale	...	A 4-22		
9 (S) Harlequins	...	H 9-14		
13 (W) Pontypool	...	A 18-0		
16 (S) Newport	...	A 4-30		
22 (F) Clifton	...	H 28-0		
27 (W)S. Wales Police	H	47-17		
30 (S) Oxford Univ.	A	24-13		
Nov. 3 (W) Bridgend			...	H 10-11
6 (S) Leicester	...	H -		
10 (W) Cambridge Univ.	H	-		
13 (S) Stroud	...	A -		
20 (S) Aberavon	...	H -		
27 (S) London Irish	A	-		
Dec. 4 (S) Moseley			...	H -
11 (S) Bath	...	A -		
18 (S) Coventry	...	H -		
26 (S) Lydney	...	H -		
(Boxing Day)				

First XV Fixtures

1977				
Jan. 1 (S) London Scott.	H	-		
8 (S) Leicester	...	A -		
15 (S) Wasps	...	A -		
19 (W) Army	...	H -		
22 (S) Moseley	...	A -		
26 (W) St. Lukes Coll.	H	-		
29 (S) Loughborough	H	-		
Feb. 4 (F) Bristol	...	A -		
12 (S) Bath	...	H -		
18 (F) Swansea	...	A -		
26 (S) Aberavon	...	A -		
Mar. 2 (W) Newport	...	H -		
5 (S) Northampton	H	-		
9 (W) Cheltenham	H	-		
12 (S) Richmond	...	A -		
16 (W) Aberlertary	...	H -		
19 (S) Guys Hospital	H	-		
26 (S) Saracens	...	A -		
30 (S) Newbridge	...	A -		
Apr. 2 (S) Cardiff	...	H -		
7 (T) Lydney	...	A -		
9 (S) New Brighton	H	-		
(Easter Saturday)				
11 (M) Fylde	...	H -		
(Easter Monday)				
16 (S) Sale	...	H -		
19 (T) Nottingham	A	-		
23 (S) Exeter	...	A -		
30 (S) Plymouth	...	H -		

LEICESTER

Scarlet, Green and White

- Full Back
O. **W. H. Hare** *†
- Three Quarters
N. **J. Duggan** *
M. **P. Dodge** *S
L. **B. Hall** *
K. **R. Barker** *
- Half Backs
J. **B. Jones** *
I. **S. Kenney** *
- Forwards
A. **R. F. Cowling** *
B. **P. J. Wheeler** *†
C. **S. Redfern** *
D. **R. E. Rowell (Capt.)** *†
E. **S. Johnson** *
F. **J. Kempin** *
G. **G. W. Adey** *†
H. **D. Forfor** *

REPLACEMENTS

A. Beevers

The First-Aid Service on this ground is provided voluntarily by
The City of Gloucester Division, St. John Ambulance Brigade



WESTGATE motorhouse

DAIMLER * JAGUAR * ROVER * TRIUMPH

Telephone: 34581





WELCOME TO THE TIGERS

Were a "Top of the Pops" survey held among rugby clubs, then vying for the leading spot as the most popular visitors to Kingsholm would surely be our old and valued Midlands friends, Leicester — the famous "Tigers" — to whom we extend a very warm welcome this afternoon.

Leicester arrive here with one of the most impressive records among the leading clubs, having won 10 of their 12 matches and scored no fewer than 308 points against 120. Last Saturday they gained a convincing away win over neighbouring Nottingham by 19 points to 6.

Honours were even between our two clubs last season, Gloucester running out winners at Welford Road by 22 - 12 on Saturday, November 1, 1975. But in the return match at Kingsholm on January 10 of this year, when unfortunately, Gloucestershire were playing Hertfordshire in the quarter-final of the county championship at Croxley Green, the Tigers avenged that earlier reverse with a 9 - 4 victory.

With our visitors in such tremendous form the Cherry and Whites will have to produce that mysterious "something extra" this afternoon to emerge victorious, perhaps bearing in mind the exhortation of Henry V to "imitate the action of the tiger" and stiffen the sinews. We look forward, then, to another exciting and entertaining game and trust the Leicester lads enjoy their brief stay in our fair city.

KINGSHOLM KACKLE

All Aboard for "Twickers"

In a month's time, in case some supporters have given little thought to it recently, Gloucester travel to Twickenham to meet Harlequins in the first round of this season's John Player Cup — on Saturday, December 4, to be precise.

No doubt many supporters will be making the journey by cars and coaches to give the lads that by now famous — or infamous, as rival camps term it — vociferous "Glawster, Glawster!" encouragement. Meanwhile, a coach has already been arranged for the Club's Patrons.

The overall cost will be approximately £6.00, which includes the 47-seater coach journey, admission ticket to the match, and an evening meal later. Extremely reasonable by anyone's standards in these days of ridiculously high inflation!

The coach will leave Kingsholm at 10.30 a.m. and all Patrons wishing to take advantage of this "special offer" should contact Mr. Jim Bennett as soon as possible in the Social Club.



"Best of Both Worlds"

Since the announcement in a recent programme that Nico Craven, whose passions evolve round Gloucestershire cricket and rugby, has published his latest book, *Best of Both Worlds*, several supporters have asked how they may best obtain it, other than by the costly way of having it sent by post.

The address of this Gloucestershire exile, who travels thousands of miles to watch his beloved county on the cricket and rugby fields, is The Coach House, Ponsonby, Seascale, Cumbria, CA20 1BX. His telephone number, not previously given is Beckermet 256.

Nico will be at Kingsholm next Saturday for the vital championship match between Gloucestershire and Somerset. Before the game he will be at the New Inn in Northgate Street, at 12 noon until 2 p.m. for what he calls the "Glosters Gathering", when he meets up with friends and supporters. He would be delighted to meet any cricket or rugby enthusiasts and will be bringing several copies of his new book.

A brief telephone call to Beckermet to arrange to pick up a book from him next Saturday would be the cheapest way to obtain your copy of *Best of Both Worlds*, price £2.25. It is packed with interesting reading on Gloucestershire's two main sports.

Forthcoming attractions

Next week brings more rich ruggar fare at Kingsholm. On Wednesday evening (kick-off 7.00 p.m.), Cambridge University, also in sparkling form this season, will be the visitors.

This is followed at the weekend by the spectacular "double bill". Next Saturday is the vital county championship match between Gloucestershire and Somerset to decide the South-West group title. Then on the Sunday comes the "plum" fixture with the All-Stars team which includes several top players in the world of rugby football.

Admission for this match is by programme only, 50p, and those who have not obtained one will find plenty on sale at the office or the Social Club.

Arthur Russell



FOR ALL YOUR PROPERTY REQUIREMENTS

Roy Long & Partners

House, Land and Estate Agents

22 Worcester Street, Gloucester

Telephone: 0452-35962/3

PERSONAL SERVICE ASSURED