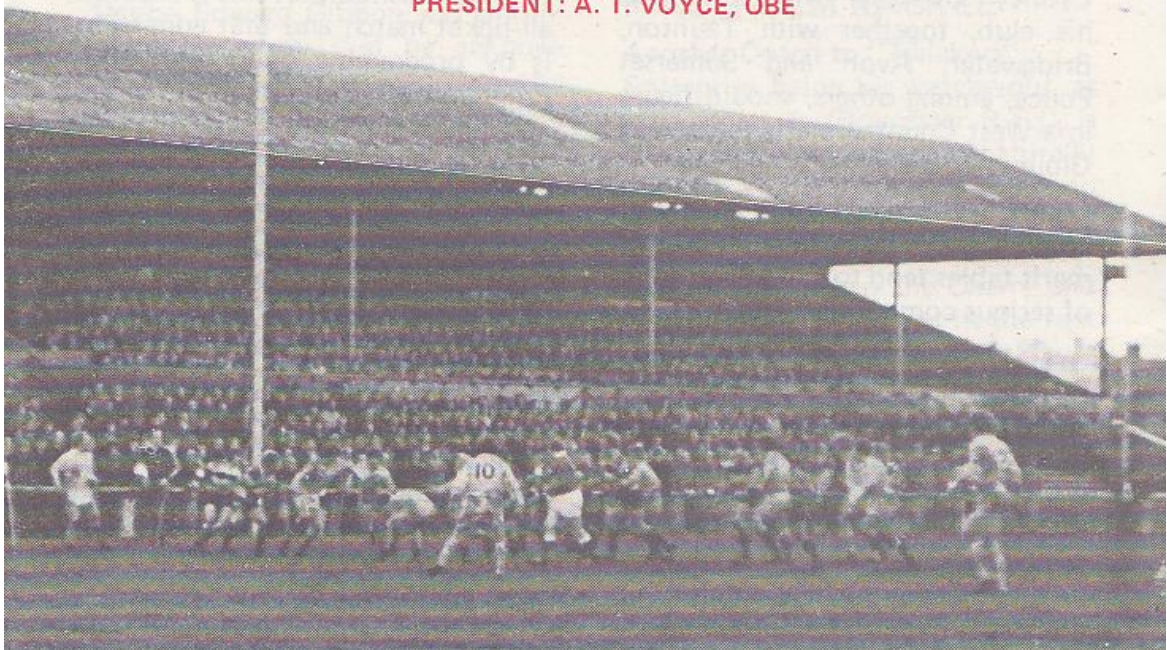




GLOUCESTER RUGBY FOOTBALL CLUB

Founded 1873

PRESIDENT: A. T. VOYCE, OBE



GLOUCESTER

V

CAMBRIDGE

UNIVERSITY

WEDNESDAY, 10th NOVEMBER, 1976

at

KINGSHOLM . GLOUCESTER

Kick-off: 7.00 p.m.

Official Programme—6p



NORMAN P. PARTRIDGE (INSURANCE BROKERS) LTD.
 1 BARTON STREET (corner of Clarence Street) GLOUCESTER
 Telephone: 32088 and 34920

Free Advice
 on all
 Insurances

GLOUCESTER
 Cherry and White

- Full Back
 15. **R. Etheridge** *
- Three Quarters
 14. **R. J. Clewes** *
 12. **R. Light** *
 11. **R. R. Mogg** *S
- Half Backs
 10. **C. G. Williams** *†
 9. **P. Kingston** *†
- Forwards
 1. **G. A. F. Sargent** *
 2. **F. C. Reed** *
 3. **P. J. Blakeway** *S
 4. **A. Brinn** *†
 5. **S. B. Boyle** *S
 6. **J. A. Watkins (Capt.)** *†
 8. **J. F. Simonett** *
 7. **J. H. Haines** *
- REPLACEMENTS
 R. Correia (back)
 S. G. F. Mills (forward) *

Referee: **M. H. TITCOMB (Bristol Society)**

- † International
 § Under-23 International
 * County
 ☆ University Blue

First XV Fixtures

1976

Sept. 4 (S) Broughton Pk.	H	31-6
8 (W) Stroud ...	H	23-3
11 (S) Coventry ...	A	12-11
15 (W) Newbridge ...	H	18-13
18 (S) Waterloo ...	H	14-10
25 (S) Bristol ...	H	6-9
29 (W) Cheltenham	A	62-7

Oct. 2 (S) Bedford ... H 35-14
 6 (W) Ebbw Vale ... A 4-22
 9 (S) Harlequins ... H 9-14
 13 (W) Pontypool ... A 18-0
 16 (S) Newport ... A 4-30
 22 (F) Clifton ... H 28-0
 27 (W) S. Wales Police H 47-17
 30 (S) Oxford Univ. A 24-13

Nov. 3 (W) Bridgend ... H 10-11
 6 (S) Leicester ... H 14-12
 10 (W) Cambridge Univ H -
 13 (S) Stroud ... A -
 20 (S) Aberavon ... H -
 27 (S) London Irish A -

Dec. 4 (S) Moseley ... H -
 11 (S) Bath ... A -
 18 (S) Coventry ... H -
 26 Lydney ... H -
 (Boxing Day)

First XV Fixtures

1977

Jan. 1 (S) London Scott.	H	-
8 (S) Leicester ...	A	-
15 (S) Wasps ...	A	-
19 (W) Army ...	H	-
22 (S) Moseley ...	A	-
26 (W) St. Lukes Coll.	H	-
29 (S) Loughborough	H	-

Feb. 4 (F) Bristol ... A -
 12 (S) Bath ... H -
 18 (F) Swansea ... A -
 26 (S) Aberavon ... A -
 Mar. 2 (W) Newport ... H -
 5 (S) Northampton H -
 9 (W) Cheltenham H -
 12 (S) Richmond ... A -
 16 (W) Abertillery ... H -
 19 (S) Guys Hospital H -
 26 (S) Saracens ... A -
 30 (S) Newbridge ... A -
 Apr. 2 (S) Cardiff ... H -
 7 (T) Lydney ... A -
 9 (S) New Brighton H -
 (Easter Saturday)
 11 (M) Fyde ... H -
 (Easter Monday)
 16 (S) Sale ... H -
 19 (T) Nottingham A -
 23 (S) Exeter ... A -
 30 (S) Plymouth ... H -

The First-Aid Service on this ground is provided voluntarily by
 The City of Gloucester Division, St. John Ambulance Brigade

CAMBRIDGE UNIVERSITY
 Light Blue and White

- Full Back
 15. **R. Grant** ☆
- Three Quarters
 14. **M. O'Callaghan** †☆
 13. **M. Horner** ☆
 12. **J. Thornton** ☆
 11. **G. Wood** S☆
- Half Backs
 10. **G. Lewis** ☆
 9. **A. J. Hignell** †☆
- Forwards
 1. **P. Boulding** ☆
 2. **G. Beringer** ☆
 3. **J. Vivian** ☆
 4. **P. Nixon** ☆
 5. **S. Brown** ☆
 6. **A. Stewart (Capt.)** ☆
 8. **E. Butler** ☆
 7. **G. Edmonds** ☆
- REPLACEMENTS
 P. Wright (back)
 G. Pritchard (forward)



WESTGATE motorhouse

DAIMLER * JAGUAR * ROVER * TRIUMPH

Telephone: 34581





CORDIAL WELCOME TO THE LIGHT BLUES

Maybe Edward Gibbon was sincere when he wrote that he acknowledged no obligation to the University of Oxford; but then, there was no Rugby football in his day to temper any such bitter thoughts. In these more enlightened days we echo vastly different sentiments about the talented rugby teams of both universities and this evening it is the Light Blues to whom we extend a particularly cordial welcome, for they only visit Kingsholm once every two years.

The Light Blues' reputation for playing attacking, constructive rucker scarcely needs any elaboration here. Last Saturday they added to their highly impressive record with a convincing home win over London Scottish by 26 points to 10. No doubt their opponents feel that, like Cassius of old, they think too much; and as Caesar wisely warned, such men are dangerous.

"Comparisons are odorous," said Dogberry, and past results can be misleading. But for the record, their last visit here, on January 25, 1975, proved disastrous for the Light Blues, who were rebuilding after the 'Varsity match, as Gloucester cruised to a 31-3 victory. However, opportunities are never lost; the other fellow takes those you miss, and it was Cambridge University's turn to gain ample revenge when they beat the Cherry and Whites by 32-12 in a mid-week match at Grange Road last season on November 12.

Effort is the highest common factor in every successful enterprise and both teams this evening will be determined to assert their authority. We look forward therefore to another exciting game of top quality rucker.

KINGSHOLM KACKLE

Another Coach to "Twickers"

Enterprise being his watchword, at least as far as Gloucester R.F.C. is concerned, Jim Holder has naturally booked a coach for supporters to announce their arrival to all and sundry at Twickenham on Saturday, December 4, when the Cherry and Whites meet Harlequins in the first round of this season's John Player Cup competition.

But the power of the "grape-vine" is such that even before any official announcement was possible, many of the seats on the coach were booked. Whether or not another coach will be necessary to join this one and that already arranged for Patrons remains to be seen; meanwhile, those who wish to amplify the "Glawster, Glawster!" cry to encourage the lads and startle the natives of "Twickers" should contact Jim this evening, as only a few seats remain.

The coach will leave from the Kingsholm car park at 10.00 a.m. and although the exact cost is not yet known it will, of course, be reasonable. In view of the demand for seats a deposit of £1.00 must be paid when booking.

Anglo-Welsh Table

It was not generally realised that last Saturday's match against Leicester was an Anglo-Welsh "league" match, so victory over the "Tigers" provided Gloucester with a satisfying boost in their position in the

table, the only one that has a genuine ring among all the other suggestions put forward.

The idea of a South-West "league" that includes Falmouth, Plymouth Albion and Exeter as contenders to such as Gloucester, Bristol and Bath is quite intolerable, while even more ludicrous is the suggestion of a Lydney supporter who feels that his club, together with Taunton, Bridgwater, Avon and Somerset Police, among others, should figure in a West Country merit table with Gloucester & Co.

Competition may be the enemy of complacency but these types of merit tables tend to make a mockery of serious competitive rugby.

Double Bill

As if Bridgend, Leicester and Cambridge University in the space of eight days were not enough to satiate the appetites of even the most voracious supporters, there is further rich fare at Kingsholm this weekend. First on the "double bill" is the vital county championship match on Saturday, (kick-off 2.45 p.m.) between Gloucestershire and Somerset.

Then on Sunday, (3.00 p.m.) comes Gloucester's "plum" fixture with the star-studded international XV, all of whom have confirmed their availability. There is one late change, Roy Bergiers taking over from his Llanelli colleague, J. J. Williams, who is attending a family christening.

It is emphasised that this is NOT an all-ticket match and that admission is by programme only, price 50p. Programmes are on sale at the office and the Social Club this evening, or may be purchased at the gate on the day of the match.

Aberavon Date Changed

Gloucester were due to meet Aberavon next Saturday week November 20, but the "Wizards" are engaged in the Welsh R.U. Cup competition on that day. They have agreed, however, to travel to Kingsholm three days later, so Gloucester will now meet Aberavon on *Tuesday evening, November 23*, with the usual 7.00 p.m. kick-off.

Arthur Russell

FOR ALL YOUR PROPERTY REQUIREMENTS

Roy Long & Partners

House, Land and Estate Agents

22 Worcester Street, Gloucester

Telephone: 0452-35962/3

PERSONAL SERVICE ASSURED