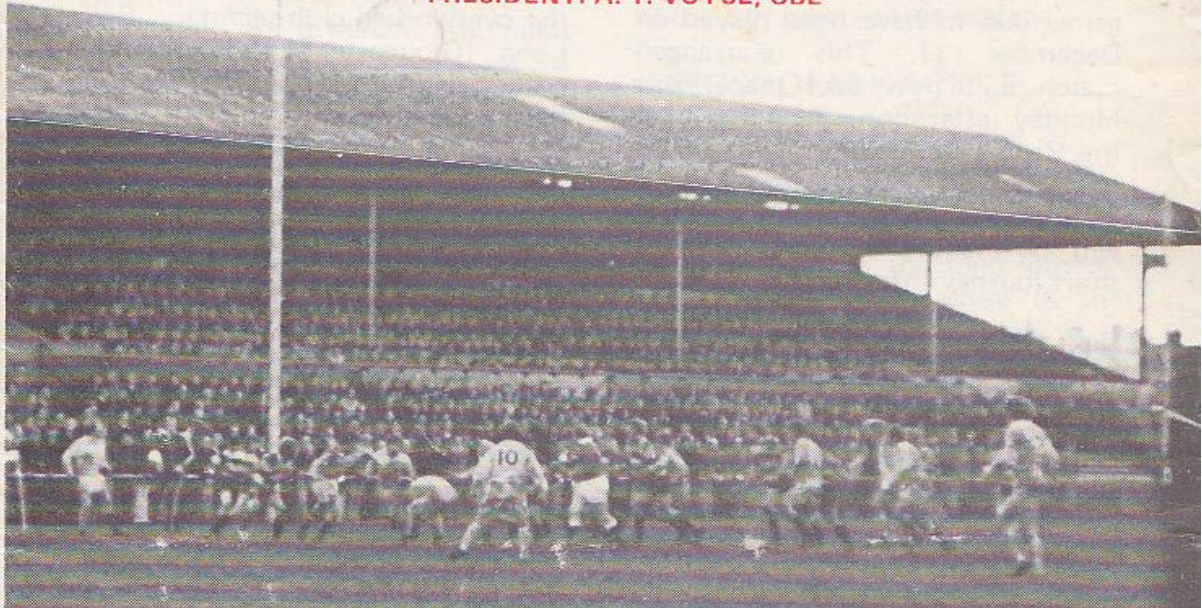




633

**GLOUCESTER RUGBY FOOTBALL CLUB**  
Founded 1873  
PRESIDENT: A. T. VOYCE, OBE



# GLOUCESTER

V

# LONDON SCOTTISH

SATURDAY, JANUARY 1st, 1977

at

KINGSHOLM . GLOUCESTER

Kick-off: 3.00 p.m.

*Official Programme—6p*





**NORMAN P. PARTRIDGE (INSURANCE BROKERS) LTD.**  
 1 BARTON STREET (corner of Clarence Street) GLOUCESTER  
 Telephone: 32088 and 34920

Free Advice  
 on all  
 Insurances.

**GLOUCESTER**  
 Cherry and White

- Full Back  
 15. **P. Butler** \*†
- Three Quarters  
 14. **R. J. Clewes** \*  
 13. **R. Jardine** \*  
 12. **D. Pointon** \*  
 11. **R. R. Mogg** \*§
- Half Backs  
 10. **C. G. Williams** \*†  
 9. **P. Kingston** \*†
- Forwards  
 1. **K. Richardson** \*  
 2. **S. G. F. Mills** \*  
 3. **M. A. Burton** \*†  
 4. **A. Brinn** \*†  
 5. **P. Winnell** \*  
 6. **J. A. Watkins (Capt.)** \*†  
 8. **E. A. Pinkney** \*  
 7. **J. Cook** \*

REPLACEMENTS

Referee: **V. SCHWARTZ (Liverpool Society)**

† International  
 § Under-23 International  
 \* County

*First XV Fixtures*

1976

Sept. 4 (S) Broughton Pk. ... H	31- 6
8 (W) Stroud ... H	23- 3
11 (S) Coventry ... A	12-11
15 (W) Newbridge ... H	18-13
18 (S) Waterloo ... H	14-10
25 (S) Bristol ... H	6- 9
29 (W) Cheltenham ... A	62- 7
Oct. 2 (S) Bedford ... H	35-14
6 (W) Ebbw Vale ... A	4-22
9 (S) Harlequins ... H	9-14
13 (W) Pontypool ... A	18- 0
16 (S) Newport ... A	4-30
22 (F) Clifton ... H	28- 0
27 (W) S. Wales Police ... H	47-17
30 (S) Oxford Univ. ... A	24-13
Nov. 3 (W) Bridgend ... H	10-11
6 (S) Leicester ... H	14-12
10 (W) Cambridge Univ. ... H	4- 4
13 (S) Stroud ... A	8-10
20 (S) Aberavon ... H	9-13
27 (S) London Irish ... A	7-16
Dec. 4 (S) John Player ... H	17- 9
11 (S) Sale ... A	P
18 (S) Coventry ... H	P
26 (S) Lydney ... H	-

(Boxing Day)

*First XV Fixtures*

1977

Jan. 1 (S) London Scott. ... H	-
8 (S) Leicester ... A	-
15 (S) Wasps ... A	-
19 (W) Army ... H	-
22 (S) Moseley ... A	-
26 (W) St. Lukes Coll. ... H	-
29 (S) Loughborough ... H	-
Feb. 4 (F) Bristol ... A	-
12 (S) Bath ... H	-
18 (F) Swansea ... A	-
26 (S) Aberavon ... A	-
Mar. 2 (W) Newport ... H	-
5 (S) Northampton ... H	-
9 (W) Cheltenham ... H	-
12 (S) Richmond ... A	-
16 (W) Abertillery ... H	-
19 (S) Guys Hospital ... H	-
26 (S) Saracens ... A	-
30 (S) Newbridge ... A	-
Apr. 2 (S) Cardiff ... H	-
7 (T) Lydney ... A	-
9 (S) New Brighton ... H	-
(Easter Saturday)	
11 (M) Fylde ... H	-
(Easter Monday)	
16 (S) Sale ... H	-
19 (T) Nottingham ... A	-
23 (S) Exeter ... A	-
30 (S) Plymouth ... H	-

The First-Aid Service on this ground is provided voluntarily by  
 The City of Gloucester Division, St. John Ambulance Brigade

**LONDON SCOTTISH**  
 Dark Blue

- Full Back  
 15. **H. Garnam**
- Three Quarters  
 14. **W. Steele** \*†  
 13. **A. Friell (Capt.)** \*  
 12. **N. Drummond**  
 11. **A. N. Other**
- Half Backs  
 10. **R. Wilson** \*†  
 9. **A. Lawson** \*†
- Forwards  
 1. **D. Fairbairn**  
 2. **D. Pickering**  
 3. **J. A. Fraser**  
 4. **A. F. McHarg** \*†  
 5. **R. Wright**  
 6. **M. A. Biggar** \*†  
 8. **A. N. Other**  
 7. **D. Macdonald** \*†

REPLACEMENTS



**WESTGATE motorhouse**

DAIMLER \* JAGUAR \* ROVER \* TRIUMPH

Telephone: 34581





## WELCOME TO THE SCOTTISH . . .

## . . . AND GRATEFUL THANKS TO OUR SPONSORS

This afternoon we extend a cordial welcome to our old friends and traditional New Year rivals, London Scottish, on their biennial visit to Kingsholm for a match, one might say, that will have a very special significance for the club. For it is the first time in the history of Gloucester R.F.C. that a match has been sponsored.

And the sponsors are that extremely well-known engineering firm, Messrs. Babcock and Wilcox Ltd., with their group of companies which comprise Muir-Hill Ltd. — Gardner's of Gloucester Ltd., Babcock-Moxey Ltd., Gloucester Railway Carriage & Wagon Co. Ltd., Slater & England Ltd. and Gloucester Foundry Ltd.

The sponsorship is under the auspices of their managing director, Mr. Archie Thomson, himself a former London Scottish player, though he modestly tries to assert that he was never a star. It is a modest statement difficult to believe for no one could play for the London Scottish first XV as often as he did without "knowing a little bit about rugby". Mr. Thomson's brother, Jimmy, incidentally, has been honorary doctor to Scottish Rugby Union for several years.

The Gloucester club thank Mr. Thomson and his company very sincerely for their generous gesture and welcome him here this afternoon, though we warn him that he may find himself "on opposite sides" when it comes to supporting our visitors, particularly as Gloucester will be thirsting for revenge.

For after beating the Scottish at Richmond three years ago, the Cherry and Whites oozed with confidence. Since then, however, Gloucester have been forcibly reminded of the truth of the words of Scotland's own great poet, Robert Burns — "The best laid schemes o' mice an' men gang aft a-gley". For London Scottish have won all of the three tussles since, including a knock-out competition match!

## KINGSHOLM KACKLE

### County Semi-Final

In three weeks time, on Saturday, January 22, Gloucestershire face a tough task in defence of their title when they make the long journey north to meet Lancashire in the semi-final at Vale of Lune. It is proposed to run at least one coach for supporters and those wishing to add their vociferous encouragement to the County are asked to contact Jim Holder as soon as possible so that the necessary arrangements can be made. On that day Gloucester are due to meet Moseley at the Reddings.

Should Gloucestershire win that important match perhaps the England selectors may indulge in more coherent thinking; for it seems quite incomprehensible that our County, having won the championship for three successive seasons, should have no more than two players in today's final England trial.

### John Player Cup

While it will doubtless be the "big" match in the second round of the John Player Cup it is rather a pity that Gloucester should have been drawn against neighbouring Bristol, for it means that there will be one West Country club less to contest the later rounds. As the match will be played at Kingsholm on Satur-



day, February 12, the original fixture with our county rivals at the Memorial Ground on Friday, February 4 will almost certainly be postponed.

So too, of course, will the fixture with Bath at Kingsholm on February 12, though no doubt the club's respective fixture secretaries will arrange a new date, as they have already with the initial postponed game, due to have been played on December 11. This re-arranged match will now take place next Monday afternoon, January 3, at the Recreation Ground, with a 3.00 p.m. kick-off, and as it is a Bank Holiday, no doubt many supporters will be making the comparatively short journey into Avon.

#### **Next Home Match**

Gloucester's next home match is on Wednesday evening, January 19, when the Army will be the visitors with the usual 7.00 p.m. kick-off. But next Saturday, January 8, at Kingsholm the highly successful United side have an attractive home fixture with Leicester Extra 1st XV.

#### **Apologies**

Club officials wish to apologise for any inconvenience to those supporters who made fruitless journeys

to Kingsholm during the recent wintry weather that has caused cancellations. It will be readily appreciated that it is virtually impossible to let supporters know when a match has to be called off on a Saturday morning.

However, should there be any doubts in supporters' minds about any game having to be called off in future, perhaps they will telephone the overworked club secretary, Roy Long (Gloucester 25335) or the ground (Gloucester 20901) shortly before the kick-off time.

In addition, the information is invariably passed to BBC Radio Bristol, which has a special sports round-up from 11.04 a.m. until 12 noon, and they have given news of Gloucester's last two cancelled matches. Most sets receive Radio Bristol quite easily and clearly, and their wavelengths are 194 metres medium wave or 95.5 VHF.

#### **Seasonal Greetings**

In conclusion the officials, committee and players join in wishing you all a very happy and prosperous New Year and thank you sincerely for your continued interest and support

Arthur Russell

*FOR ALL YOUR PROPERTY REQUIREMENTS*

## **Roy Long & Partners**

**House, Land and Estate Agents**

22 Worcester Street, Gloucester

Telephone: 0452-35962/3

*PERSONAL SERVICE ASSURED*