

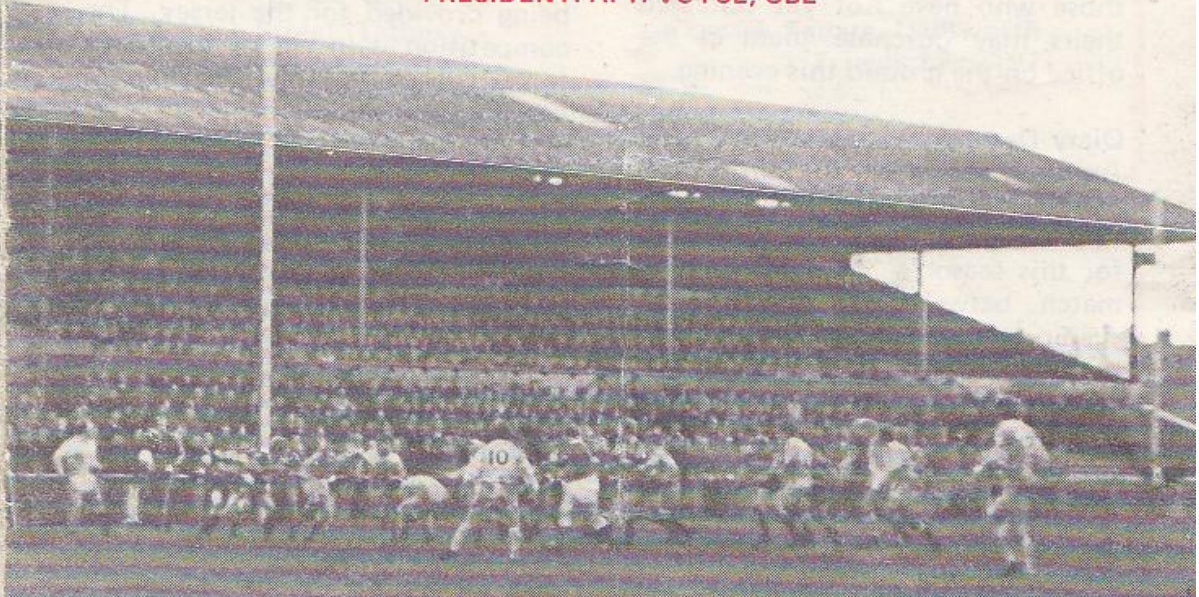


457

GLOUCESTER RUGBY FOOTBALL CLUB

Founded 1873

PRESIDENT: A. T. VOYCE, OBE



GLOUCESTER



ST. LUKE'S COLLEGE

FRIDAY, 4th FEBRUARY, 1977

at

KINGSHOLM . GLOUCESTER

Kick-off: 7.00 p.m.

Official Programme—6p



NORMAN P. PARTRIDGE (INSURANCE BROKERS) LTD.

1 BARTON STREET (corner of Clarence Street) GLOUCESTER
Telephone: 32088 and 34920

Free Advice
on all
Insurances.

GLOUCESTER

Cherry and White

- Full Back
15. P. E. Butler *†
- Three Quarters
14. R. J. Clewes *
13. D. Pointon
12. R. Moody *§
11. R. R. Mogg *§
- Half Backs
10. C. G. Williams *†
9. P. Kingston *†
- Forwards
1. G. A. F. Sargent *
2. F. C. Reed *
3. K. Richardson *
4. S. B. Boyle *
5. P. Winnell *
6. J. A. Watkins (Capt.) *†
8. E. A. Pinkney *
7. J. H. Haines *

REPLACEMENTS

J. Herniman
R. Correia

Referee: D. I. Williams (Army)

† International

§ Under-23 International

* County

First XV Fixtures

1976

Sept. 4 (S) Broughton Pk. H 31-6
8 (W) Stroud ... A 23-3
11 (S) Coventry ... A 12-11
15 (W) Newbridge ... H 18-13
18 (S) Waterloo ... H 14-10
25 (S) Bristol ... H 6-9
29 (W) Cheltenham A 62-7

Oct. 2 (S) Bedford ... H 35-14
6 (W) Ebbw Vale ... A 4-22
9 (S) Harlequins ... H 9-14
13 (W) Pontypool ... A 18-0
16 (S) Newport ... A 4-30
22 (F) Clifton ... H 25-0
27 (W/S) Wales Police H 47-17
30 (S) Oxford Univ. A 24-13

Nov. 3 (W) Bridgend ... H 10-11
6 (S) Leicester ... H 14-12
10 (W) Cambridge Univ H 4-4
13 (S) Stroud ... A 8-10
20 (S) Aberavon ... H 9-13
27 (S) London Irish A 7-16

Dec. 4 (S) John Player ... H 17-9
11 (S) Sale ... A C
18 (S) Coventry ... H C
26 Lydney ... H 47-10
(Boxing Day)

First XV Fixtures

1977

Jan. 1 (S) London Scott. H 0-0
8 (S) Leicester ... A 25-10
15 (S) Wasps ... A 32-6
19 (W) Army ... H 18-14
22 (S) Moseley ... A 0-28
26 (W) St. Lukes Coll. H P
29 (S) Loughborough H 26-3

Feb. 4 (F) St. Lukes Coll. H -
12 (S) John Player H -
18 (F) Swansea ... A -
26 (S) Aberavon ... A -

Mar. 2 (W) Newport H -
5 (S) Northampton H -
9 (W) Cheltenham H -
12 (S) Richmond ... A -
16 (W) Abertillery ... H -
19 (S) Guys Hospital H -
26 (S) Saracens ... A -
30 (S) Newbridge ... A -

Apr. 2 (S) Cardiff ... H -
7 (T) Lydney ... A -
9 (S) New Brighton H -
(Easter Saturday)

11 (M) Fylde ... H -
(Easter Monday)

16 (S) Sale ... H -
19 (T) Nottingham A -
23 (S) Exeter ... A -
30 (S) Plymouth ... H -

St. LUKE'S COLLEGE

Light Blue and Dark Blue

- Full Back
15. N. Perryman
- Three Quarters
14. A. Bagguley
13. D. Brooks
12. J. Hurley
11. G. Walters
- Half Backs
10. P. Radmore
9. J. Pickin
- Forwards
1. B. Howarth
2. A. Wolstenholme
3. S. Whale
4. T. Holton
5. M. Patching
6. J. Smith
8. T. Charles (Capt.)
7. M. Wise

REPLACEMENTS

B. Redko
A Rutherford

The First-Aid Service on this ground is provided voluntarily by
The City of Gloucester Division, St. John Ambulance Brigade



WESTGATE motorhouse

DAIMLER * JAGUAR * ROVER * TRIUMPH

Telephone: 34581





VERY WARM WELCOME TO THE STUDENTS

This evening we extend a particularly warm welcome to St. Luke's College who have re-arranged their own fixtures in order to play at Kingsholm and accommodate Gloucester, for whom it would otherwise have been a blank weekend — not a satisfactory state of affairs in view of next week's John Player Cup tie with Bristol!

The College were due to have visited Kingsholm last Wednesday week, but the game had to be called off because of the extremely wet ground. Their readiness to meet the Cherry and Whites this evening is the more appreciated as their speed, fitness and insistence on playing open and constructive rugby is virtually a guarantee of an entertaining game.

Last season, on Wednesday evening, January 28, 1976, Gloucester beat the Students in what the TV producers term a "thriller" by 23 - 16, but it may be recalled that our popular visitors, reacting forcefully to an interval deficit, provided the shocks by scoring 12 points in an exciting second half.

We look forward, then, to such another tussle this evening and in thanking our College friends, trust they enjoy their brief stay in our fair city.

KINGSHOLM KACKLE

Visit to Stradey Park

While the number of postponed or cancelled fixtures this season because of the atrocious weather conditions has no doubt been a source of frustration for supporters, it has been a veritable headache for our harassed fixture secretary, Doug Dawe.

But with the proverbial wet towel and bottle of aspirins to assist him it now seems he will be able to re-arrange the game at the Memorial Ground with Bristol — which was originally due to be played tonight — and the home matches against Bath and Moseley.

And perhaps the biggest achievement of all, Gloucester will now travel to Stradey Park to play Llanelli on Saturday, February 26, instead of Aberavon, engaged in the Welsh Cup on that day.

It is nearly 15 years since the Cherry and Whites last played the famous Welsh Scarlets and it is hoped that this game at "Stradey" will lead to a resumption in fixtures between the two clubs.

Patrons' Appeal Fund

The Patrons' Appeal Fund has now reached one-third of its target — the Sub-Committee emphasize a lot of hard work will be needed to reach £1000. The General Committee have approved the holding of another Patron's Evening, the date of which will be announced as soon as possible.



The Cup Clash

Even lukewarm followers need no reminding that tomorrow week, Saturday, February 12, brings the John Player second round cup clash with stern rivals and neighbours, Bristol, to Kingsholm — kick-off 3.00 p.m. But it may not come amiss to remind them that stand tickets are rapidly disappearing and those who have not yet obtained theirs may purchase them at the office on the ground this evening.

Diary Date

Another reminder for supporters and all local rugby enthusiasts is that Kingsholm has been selected for this season's "Mini" University match between our visitors this evening and their great rivals, Loughborough Colleges, seen in action here last Saturday.

This important match, which will undoubtedly attract a large crowd from near and far, is to be played on Wednesday evening, February 23, with the usual kick-off at 7.00 p.m. And with the expected huge support from both Colleges our own supporters are advised to take their places as early as possible.

Competition Prize

An England jersey presented by Mike Burton and a match ball autographed by all members of the current national team will be the first prize in a competition to be held during the Gloucester-Bristol Cup clash next weekend.

It is hoped to have these on show this evening and a glass case is being provided for the jersey. The competition is in aid of the funds for Gloucester's American tour in late May and early June.

More Rugger Fare

There is more rugger fare at Kingsholm tomorrow when Gloucester United, unbeaten at home this season and nearing the 600 points mark, meet rivals Bristol United, who last September inflicted upon them one of their rare defeats.

Jim Jarrett and his lads will be thirsting for revenge, therefore, and will appreciate the "Kingsholm Roar". But supporters should note that the kick-off time is *12 noon*.

Arthur Russell

FOR ALL YOUR PROPERTY REQUIREMENTS

Roy Long & Partners

House, Land and Estate Agents

22 Worcester Street, Gloucester

Telephone: 0452-35962/3

PERSONAL SERVICE ASSURED