



## BARRY LLEWELYN SPORTS

MARKET STREET . LLANELLI

— AND —

## STRADEY SPORTS

COWELL STREET PRECINCT . LLANELLI

Telephone — 3270

Branches also at— **TENBY** Tel. 2413 and **SAUNDERSFOOT** Tel. 812429

**Stradey Park**  
Llanelli

**Parc Y Strade**  
Llanelli

# LLANELLI

# GLOUCESTER

SATURDAY  
26th FEBRUARY, 1977  
Kick-Off 3.00 p.m.

OFFICIAL  
PROGRAMME **10p**

## RICHARDS TRAVEL LIMITED



**YOUR AGENT FOR ALL LEADING TRAVEL AGENCIES**

YOUR TRAVEL ARRANGEMENTS MADE EASY LET US HANDLE YOUR PROBLEMS—WHY BOTHER WITH DETAILS—WE ARE THE PEOPLE WHO WILL LOOK AFTER YOU

**1 John Street**  
Llanelli Tel.: 4787

**7 College Street**  
Ammanford Tel. 2075

**13 Guildhall Square**  
Carmarthen Tel. 7615

### **LLANELLI RFC OFFICERS**

President—HANDEL ROGERS  
Chairman—GLAN TUCKER  
Hon. Secretary—KEN JONES  
Hon. Treasurer—  
ROWLAND HUGHES  
Club Coaches—  
NORMAN GALE  
CARWYN JAMES  
TOM HUDSON  
WYNDHAM EDWARDS  
PETER LEWIS  
Club Captain—PHIL BENNETT  
Physiotherapist—BERT PEEL  
Fixture Secretary—  
HANDEL G. GREVILLE  
Committee—  
Emlyn Ambrose, Gethin Hughes,  
Marlston Morgan, Handel  
Greville, Norman Gale, Handel  
Thomas, Hywel Thomas.  
Men behind the Programme—  
Production GLYNN WALTERS  
Advertising—  
Cty. Councillor D. H. COOKE  
Sales JOE LEWIS  
Club Colours SCARLET  
Tel. LLANELLI 4060 - 2310  
Ground STRADEY PARK

### **SUPPORTERS CLUB OFFICERS**

President—EMLYN AMBROSE  
Chairman—ERNIE B. REES  
Vice-Chairman—  
HARRY DAVIES  
Hon. Treasurer—  
HARRY HOWELLS  
Badge Steward—  
ERNIE B. REES  
Programme Steward—  
JOE LEWIS  
Hon. Secretary—  
ARFON ROBERTS,  
99 Corporation Avenue,  
Llanelli. Tel. 3301  
Life Members—  
W. TOWNSEND  
L. L. TAYLOR  
D. E. AMBROSE  
Committee—  
D. E. Ambrose, L.L. Taylor, H.  
Davies, W. Hughes, E. B.  
Bowen, T. R. Bevan, J. Lewis, J.  
P. Rees, G. Walters, R. Harry, P.  
A. Williams, G. Freeman, H. J.  
Williams,

## **Editorial**

May I on behalf of the Llanelli Rugby Football Club extend the warmest of welcomes to our famous visitors, Gloucester RFC, a Club with a great tradition extending over 104 years.

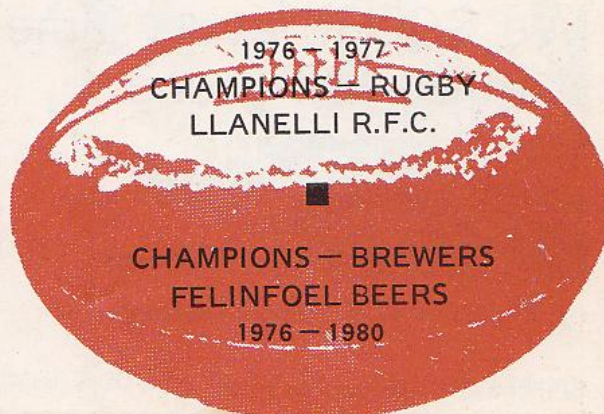
Like the Scarlets they have made a great impact in competitive rugby, and have only been defeated four times in six seasons of Cup rugby. They won the John Player Trophy in 1972-73, and aim to win again this year.

Llanelli won at Newbridge last Saturday, and the pack fielded was one of the youngest in the history of the club, this I believe is an indication of the strength in depth the club possesses.

Last Saturday was a red letter day for Andy Hill, when he scored his 250th try for the Club, our heartiest congratulations to Andy, a fine player, and an excellent clubman.

John J. Williams, I regret, is unable to play today, last Saturday he was a victim of a vicious punch in the mouth by a Newbridge forward, resulting in his needing a dentist who happily did an excellent job, and we hope he will be fit and well for the game against England next Saturday.

Croeso Caerloyw — Welcome to Gloucester — here's to a grand game of rugby.



## **GLOUCESTER R.F.C.—A MAGNIFICENT CLUB BY ANY STANDARDS**

By GLAN WISE, (Llanelli News Sports writer)

Anyone visiting the Cathedral City of Gloucester are made readily aware that it is very much a rugby mad stronghold. All sporting discussions are centred around their much cherished and world renowned Cherry and Whites—the colours they play in and the name they are affectionately known as. Unlike other English Cities it has the unique distinction of having rugby as the No. 1 sport, with soccer very much in the background.

On a recent visit to their club at Kingsholm, I was amazed at the Welsh-like atmosphere surrounding this Mecca of West Country Rugby Football. It is apparent that the fervent dedication of players and administrators have made and (are making) this one of the foremost clubs in the land. It is an immensely proud club, a club

which has produced a wealth of talent on and off the field in their one hundred and four years existence.

The most revered personalities, in their colourful history is that great rugby football servant, reigning club president, Tom Voyce. Ranked as the father of all wing forwards. He gained a total of 27 Caps in the 1920's, a club record, he also played for the British Lions. He has served the game of rugby as player and administrator longer than any other man—55 years, it goes without saying that he is held in the highest esteem in all rugby circles.

In Post war years, many outstanding internationals have donned their country's jersey with distinction. Don Rutherford, Peter Ford, Alan Brinn, Mike Burton, John Watkins, Peter Butler, to name but a few. Then there

# **LAWSONS FROZEN GOODS CASH-N-CARRY**

**Tel. 4466 & 58264**

**SWANSEA ROAD, LLANELLI**

**For all your Bulk Purchases**

**The Largest Display of Frozen Foods in Wales**



**Stock up from our large variety of foods at most competitive prices**



*Parking space for over 100 cars*

**LATE NIGHTS— THURSDAY UNTIL 7.30 p.m. — FRIDAYS UNTIL 8.00 p.m.**

was the famous Welsh Captain of the fifties John Gwilliam who won 23 caps for his country as a Cherry and Whites player.

Gloucester have always managed to produce great forwards, and much of their success over the years has been attributed to the power and control and dominance of their pack.

In 1972, their powerful pack, one of the greatest in their history, laid the foundations for their sides' triumph in the English R.U. Knock-Out Cup Competition, the year of its inception.

A feat which they hope to achieve again this season, having reached the Quarter-final stages with a convincing 12-3 win over the formidable Britol XV at Kingsholm a couple of weeks ago.

Gloucester oppose last year's winners Gosforth in the big North v. South clash next Saturday.

Aspirations are running high at the club, coach, Mike Nicholls, one of Gloucester's finest ever captains who

retired prematurely last season with a leg injury, is quietly confident that his side can pull it off against Roger Uttley and his men and move into next month's semi-finals, but he doesn't under-estimate the task that faces them.

Mike will be pinning his hopes on his heavyweight pack obtaining good clean possession. Whilst they do not claim to have a glittering back division, they have a thoroughly workmanlike one, with internationals Peter Butler, flyhalf Chris Williams and under '23' Cap Richard Mogg on the wing, players capable of notching up the points if given the opportunity.

Gloucester, like Llanelli enjoy and appreciate the many thousands of fanatical supporters they get for home and in instances away matches.

We at Stradey extend our sincere best wishes for next weeks encounter and hope you go on to win the cup for a second time.

## **M.L.M.** CONTRACTORS (Kidwelly) LTD.

HAVE PLEASURE IN OFFERING FOR SALE

### **FREEHOLD BUNGALOWS**

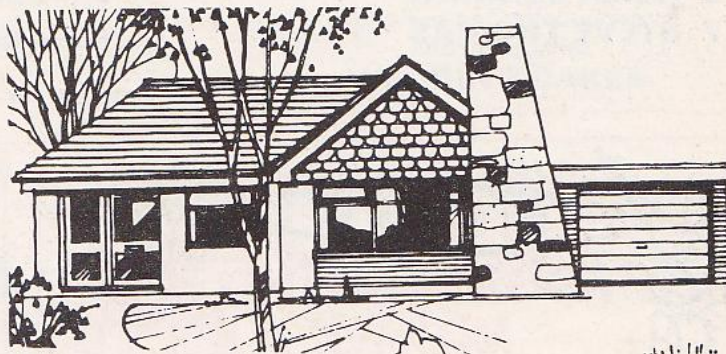
at their new  
Development Sites  
in

### **IDOLE**

Nr. Carmarthen  
and

### **PEMBREY**

Nr. Llanelli



**SEASIDE COUNTRY, FERRYSIDE**

**M.L.M.** FELINDRE YARD,  
KIDWELLY

BUILDING AND CIVIL  
ENGINEERING CONTRACTORS

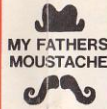


**PLANT HIRE SPECIALISTS**

TEL.: KIDWELLY 353



**The Scarlets are the Leaders  
on the Field  
We are the Leaders in  
The Field of Fashion**



**Stepney St. Arcade, Llanelli**  
Telephone : 58895  
**4 Belle Vue Way, Swansea**  
Telephone : 52727



**LLANELLI**  
Colours—Scarlet

- 15 KERI COSLETT
- 14 ANDY HILL
- 13 ROY BERGIERS
- 12 ALUN LEWIS
- 11 CLIVE GRIFFITHS
- 10 DAVID NICHOLAS
- 9 SELWYN WILLIAMS
- 1 BARRY LLEWELYN
- 2 HOWARD THOMAS
- 3 JOHN WILLIAMS
- 4 DEREK QUINNELL
- 5 ROGER POWELL
- 6 ALUN DAVIES
- 8 HEFIN JENKINS
- 7 STEVE THOMAS

- |                |              |
|----------------|--------------|
| Cefnwr         | Full Back    |
| Asgell Dde     | Right Wing   |
| Canolwr Dde    | Right Wing   |
| Canolwr Chwith | Left Centre  |
| Asgell Chwith  | Left Wing    |
| Maswr          | Outside Half |
| Mewrwr         | Inside Half  |
| Prop Rhydd     | Prop         |
| Bachwr         | Hooker       |
| Prop Tyn       | Prop         |
| Clo            | Lock         |
| Clo            | Lock         |
| Blaenasgellwr  | Flanker      |
| Wythwr         | No. 8        |
| Blaenasgellwr  | Flanker      |

Referee: Mr. F. H. SMITH, Cwmbran

**GLOUCESTER**  
Cherry - White

- 15 PETER BUTLER
- 14 BOB CLEWES
- 13 BOB LIGHT
- 12 DAVE POINTEN
- 11 RICHARD MOGG
- 10 ROD CORRIEA
- 9 WAYNE BIRCHLEY
- 1 GORDON SERGEANT
- 2 STEVE MILLS
- 3 MIKE BURTON
- 4 ALAN BRINN
- 5 PHIL WHINNELL
- 6 JOHN WATKINS
- 8 EDDIE PINKNEY
- 7 JOHN HAINES

Serving the Public for **60 Years**

**JOHN REES & SONS  
(Bakers) LTD.**

**CROWN BAKERY  
BRYN ROAD LLANELLI**  
Tel.: 4506  
Est. 1916

Our Speciality is—  
**CRUSTY BREAD**  
Baked on the oven bottom  
and our ever popular  
**BARAGWENITH BREAD**  
All types of Confectionery  
and top quality  
**WEDDING CAKES**



*I find they help you*  
**THOMAS AND NICHOLAS LTD.**  
THE IRONMONGERS  
SUPPLIERS TO WORKS CONTRACTORS  
BUILDERS ENGINEERS & HOUSEHOLD  
39 Market Street . Llanelli

Telephone :  
LLANELLI  
3181 - 2

Make it YOUR centre for a YOUR sporting requirements  
Best Quality Goods . . . at Best Competitive Prices  
Agents for : Adidas . Cotton Oxford . Laws . Gola  
Puma . Bukta . Umbro . Sereena . Gunn & Moore  
Slazenger and Dunlop

**Lyric Sports  
Centre**

TELEPHONE :  
**King Street 7166 . Carmarthen**  
PLEASE ASK FOR CLUB DISCOUNTS



LET THE SCARLETS HANDLE THE BALL  
LET US HANDLE YOUR BUSINESS

**RED DRAGON  
GARAGE** (PEMBREY) Limited

A good selection of USED CARS always in stock  
Hire Purchase and Part Exchange arranged  
**Pembrey . Burry Port 2302-3**

## AWESOME POWER AT FORWARD

by GARETH HUGHES, 'Swansea Sound' and 'Football Echo' Reporter

Gloucester have always been one of the most redoubtable of English club sides. Their reputation has been built on awesome and uncompromising power at forward, supported by a high degree of competence and industry behind the scrum.

Solidity at full-back has always been a hallmark of Gloucester rugby. A generation ago, it was that fine English international, Bill Hook, who sapped the energies and aspirations of teams visiting the Kingsholm ground with a degree of soundness and dependability surpassed only by the most rarely gifted of players in the position.

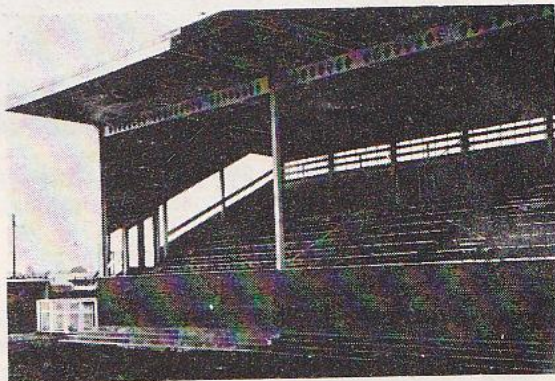
The standards set so impressively by Bill Hook are being maintained today by Peter Butler, a full-back whose place-kicking accuracy has been frequently displayed in televised

games. With four caps to his credit, including one against France last season, Peter Butler is currently recapturing his best form after a three month absence through injury. Last year, he was the most prolific goal kicker in English rugby, with more than 500 points to his credit, and among his accomplishments was kicking all of Gloucestershire's 24 points in their emphatic County Championship win over Middlesex at Twickenham.

Until their defeat by Lancashire in this season's competition, Gloucestershire had dominated the English County Championship in almost as resounding a fashion as Llanelli have monopolised the WRU Cup. The West countrymen have, in fact, won the English Championship for the past three seasons, and many of the Gloucester Club team have, like Peter Butler, played a

# KOLAR CONSTRUCTION

◆  
ALL TYPES OF STEEL  
WORK CARRIED OUT



## STRUCTURAL ENGINEERS AND STEEL FABRICATION SPECIALISTS

Head Office:  
**1 College Street  
LLANELLI**

Tel.:  
**24800  
56138**

Works:  
**Machynis Road  
Machynis, Llanelli**

notable part in these successes.

Rather surprisingly perhaps, Gloucester have not managed to emulate the County team's inspiring record in the Club Knock-out Competition. They won the trophy in the first year in which the competition was held, 1972, but subsequently failed to progress beyond the second round until the present season. In a fortnight's time they travel to Gosforth, to meet the Cup holders in one of the quarter final matches, and will no doubt look upon today's match as important preparation for that hard challenge.

There are five full English internationals in the present Gloucester squad. One of them, inside-half Peter Kingston, the holder of two caps, is currently out of action through injury, giving his promising understudy, Wayne Birchley, the opportunity to show his skills. Outside half Chris Williams was capped against France

last season, and in the pack are two players whose reputations are formidable, to say the least — British Lions prop Mike Burton, who has fifteen caps, and the outstanding club captain, flanker John Watkins, who has played for England four times.

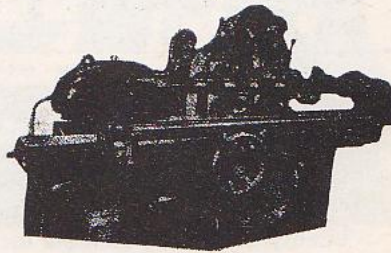
There are two Under 23 internationals in left wing Richard Mogg and lock forward Steve Boyle. Gloucester's most experienced centre, Richard Jardine, is out of the side through illness, but two other players to look out for are right wing Bob Clewes, who was top try scorer for the club last season with more than thirty tries, and flanker John Haines, a back row worker rated by many as more effective even than Bristol's current international, Mike Rafter.

Judged by their own high standards, Gloucester have not perhaps been quite at their best this season, but their record will stand comparison with most of the leading English clubs,

# DAVIES BEARINGS

## AUTO ENGINEERING SPECIALISTS

COMPLETE OR PART ENGINE OVERHAULS UNDERTAKEN  
CRANKSHAFT GRINDING UP TO 84" LONG  
CYLINDER BORING AND HONING 1½"-12¾" x 27" DEPTH  
—ALSO CYLINDER SLEEVING  
METAL SPRAYING — LATHE TURNING  
UNIVERSAL GRINDING — MILLING, ETC.  
SURFACE GRINDING CYLINDER HEADS, 62" TO 13½", ETC.  
VALVES AND VALVE SEAT GRINDING AND VALVE SEAT  
INSERTS FITTED — SUPPLIERS OF ENGINE SPARES  
AGENTS FOR "POWERMAX" PISTONS AND BEARINGS



## GWSCWM WORKS - BURRY PORT

Telephone: BURRY PORT 2558

and a team which can include Bedford, Coventry, Bristol and the Harlequins among their recent vanquished cannot be regarded lightly.

The return of Gloucester to the Llanelli fixture card after a break of

fourteen years is welcomed unreservedly. The two clubs are among the most prestigious in their respective countries, and it is only proper that they again come together in what is certain to be a rousing test of strength.

### ANSWERS TO LAST WEEK'S POSERS

1—Phil Bennett first captained a senior Welsh XV during 1970-71 season v Fiji at Cardiff. Scoreline Wales Under 25 — 8pts. Fiji 6pts.

2—The two Llanelli centres v 1970 Springboks were John Thomas and Graham Griffin.

3—The Llanelli captain in the first WRU Cup Final was Phil Bennett.

4—J. J. Williams scored 12 tries on the 1974 Lions tour.

NOW TRY THESE (Answers in next match programme)

1—Most rugby supporters are aware that Phil Bennett became Wales' first 'Sub', but who can claim the distinction of being second.

2—Name the Llanelli players that appeared for Wales 'B' last season.

*Devised by LES WILLIAMS*

## YOUR WASTE DISPOSAL

Skips Available

24-Hour Service  
over a wide area for  
Solid Industrial  
Waste



### South Wales Disposal Co.

VITREFLEX YARD — DAFEN — LLANELLI

Telephone: 05542 — 3037

After Office Hours: 05542 — 2565/59567/59434