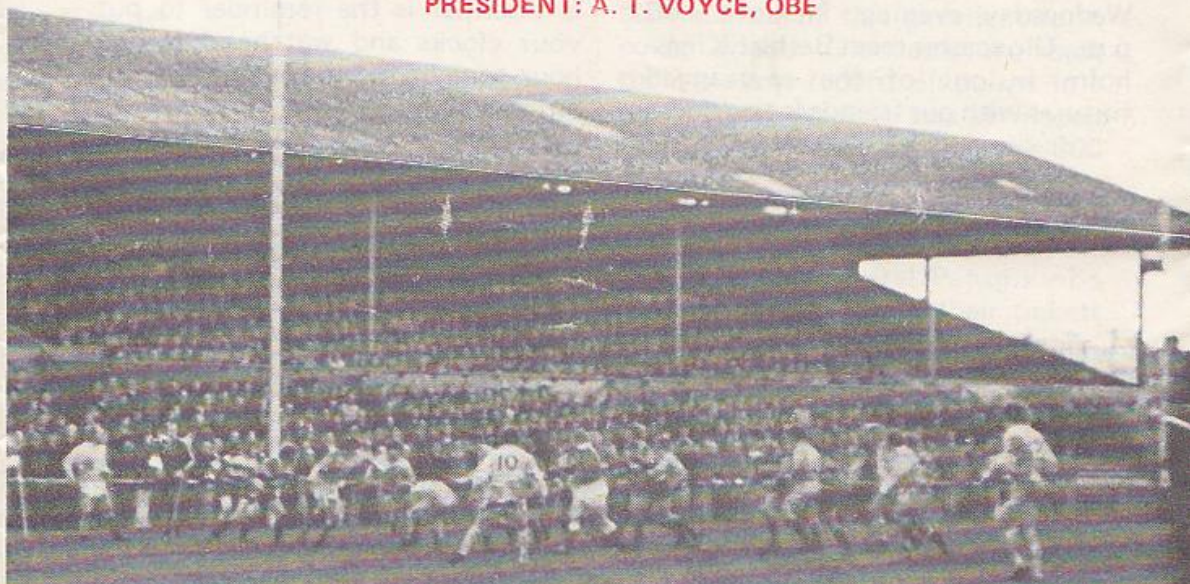




GLOUCESTER RUGBY FOOTBALL CLUB

Founded 1873

PRESIDENT: A. T. VOYCE, OBE



GLOUCESTER

V

GUY'S HOSPITAL

SATURDAY, 19th MARCH, 1977

at

KINGSHOLM · GLOUCESTER

Kick-off: 3.00 p.m.

Official Programme—6p



NORMAN P. PARTRIDGE (INSURANCE BROKERS) LTD.

1 BARTON STREET (corner of Clarence Street) GLOUCESTER
Telephone: 32088 and 34920

Free Advice
on all
Insurances

GLOUCESTER

Cherry and White

- Full Back
15. R. Etheridge *
- Three Quarters
14. R. J. Clewes *
13. B. J. Vine *
12. R. Jardine *
11. R. R. Mogg *
- Half Backs
10. D. Pointon *
9. P. Howells
- Forwards
1. P. J. Blakeway *§
2. S. G. F. Mills *
3. M. A. Burton *†
4. S. B. Boyle *§
5. P. Winnell
6. J. A. Watkins (Capt.) *†
8. J. Simonet *
7. J. Cooke

REPLACEMENTS

P. Williams
J. Fidler

Referee: H. J. WILLIAMS (Gloucestershire Society)

† International

§ Under-23 International

* County

First XV Fixtures

1976	
Sept. 4 (S) Broughton Pk. ... H	31-6
8 (W) Stroud ... H	23-3
11 (S) Coventry ... A	12-11
15 (W) Newbridge ... H	18-13
18 (S) Waterloo ... H	14-10
25 (S) Bristol ... H	6-9
29 (W) Cheltenham ... A	62-7
Oct. 2 (S) Bedford ... H 35-14	
6 (W) Ebbw Vale ... A	4-22
9 (S) Harlequins ... H	9-14
13 (W) Pontypool ... A	18-0
16 (S) Newport ... A	4-30
22 (F) Clifton ... H	28-0
27 (W) S. Wales Police ... H	47-17
30 (S) Oxford Univ. ... A	24-13
Nov. 3 (W) Bridgend ... H 10-11	
6 (S) Leicester ... H	14-12
10 (W) Cambridge Univ. ... H	4-4
13 (S) Stroud ... A	8-10
20 (S) Aberavon ... H	9-13
27 (S) London Irish ... A	7-16
Dec. 4 (S) John Player ... H 17-9	
11 (S) Sale ... A	C
18 (S) Coventry ... H	C
26 (S) Lydney ... H	47-10

(Boxing Day)

First XV Fixtures

1977	
Jan. 1 (S) London Scott. ... H	0-0
8 (S) Leicester ... A	25-10
15 (S) Wasps ... A	32-6
19 (W) Army ... H	18-14
22 (S) Mosley ... A	0-28
26 (W) St. Lukes Coll. ... H	P
29 (S) Loughborough ... H	26-3
Feb. 4 (F) St. Lukes Coll. ... H	26-3
12 (S) John Player ... H	12-3
18 (F) Swansea ... A	6-11
26 (S) Llanelli ... A	16-57
Mar. 2 (W) Newport ... H	6-3
5 (S) Northampton ... H	31-6
9 (W) Cheltenham ... H	52-0
12 (S) John Player ... A	0-3
16 (W) Abertillery ... H	51-4
19 (S) Guys Hospital ... H	-
26 (S) Saracens ... A	-
30 (S) Newbridge ... A	-
Apr. 2 (S) Cardiff ... H	-
7 (T) Lydney ... A	-
9 (S) New Brighton ... H	-
(Easter Saturday)	
11 (M) Fyde ... H	-
(Easter Monday)	
16 (S) Sale ... H	-
19 (T) Nottingham ... A	-
23 (S) Exeter ... A	-
30 (S) Plymouth ... H	-

The First-Aid Service on this ground is provided voluntarily by
The City of Gloucester Division, St. John Ambulance Brigade

GUY'S HOSPITAL

Navy Blue and Gold

- Full Back
15. T. Wilkinson
- Three Quarters
14. C. McLauchain
13. P. Emery
12. G. Francis
11. A. Portelli
- Half Backs
10. L. Hughes
9. R. Laws
- Forwards
1. G. Parry
2. T. Gibson
3. G. Evans
4. J. Gray
5. B. Keevil
6. T. Brazier
8. P. Loxton
7. T. Palmer

REPLACEMENTS

M. Rees



WESTGATE motorhouse

DAIMLER * JAGUAR * ROVER * TRIUMPH

Telephone: 34581





WELCOME TO THE GOLDEN OLDIES

Our introduction is not intended to be derogatory in any way, of course, suggesting that our visitors are hoary old gentlemen. Yet it is apt to the extent that Guy's Hospital, to whom we extend a very cordial welcome this afternoon, is generally accepted to be the oldest rugby club in existence, having been founded as long ago as 1843 — before Gilbert and Sullivan had even thought of producing their immortal works!

Moreover, gold is prominent in the colours of their jerseys, which some of our younger supporters may not have seen. For Guy's Hospital, with whom Gloucester have one fixture annually on a home and away basis, have not appeared at Kingsholm in recent years.

The corresponding fixture two seasons ago was cancelled because of the inclement weather at that time, but last season, on Saturday, March 20, 1976, Gloucester romped to a resounding victory at Honor Park by 52 points to 4.

Guy's then, will be anxious to put the record a little straighter this afternoon and we look forward to another enjoyable game, particularly as our old friends appear to have been absent so long.

KINGSHOLM KACKLE

Great Win

Casting aside all those inhibitions which pervaded their performance in the John Player Cup tie the lads returned to something approaching their sparkling best in accounting for Abertillery by such a resounding margin on Wednesday evening. A continuance of this excellent form could enable Gloucester to beat their present record of points in a season, and prior to this afternoon they were already nearing the 800 mark!

Patrons' Night

There are still several Patrons who have not yet obtained their tickets for their special annual 'get-together' to be held in the Social Club next Thursday, March 24 (8.00 for 8.30 p.m.). These are available from Roy Long, the Club Secretary, at 22 Worcester Street.

Tour Winner

Mr. Paul Mooney, of 29 Canberra, Stonehouse, who is a self-employed plumber, has won the big prize of a free place on Gloucester's three-week American tour during May and June. His winning ticket in the competition was drawn out by the referee after last Wednesday evening's match.

He has not yet decided whether or not he will be able to take advantage of this tremendous opportunity, but his alternative will be a cash prize of £250. Congratulations, Mr. Mooney.



300 Club Draw

The fifth and penultimate draw of the *300 Club* this season will be held in the Social Club next Friday evening at 9.00 p.m. The final one, which will include the large prize of £350, will be on Friday, April 29.

Next Match

Supporters are reminded that next Wednesday evening, kick-off 7.00 p.m., Gloucester meet Bath at Kingsholm in one of the re-arranged fixtures with our friends from 'down

south'. Both the original fixtures with Bath had to be postponed because of John Player Cup commitments.

Put your Clocks ON

The fact that there is a new moon tonight, or that it heralds the Vernal Equinox, may not be of significant importance to supporters. But what is essential is the reminder to put your clocks and watches ON one hour tonight for the start of British Summer Time.

Arthur Russell



FOR ALL YOUR PROPERTY REQUIREMENTS

Roy Long & Partners

House, Land and Estate Agents

22 Worcester Street, Gloucester

Telephone: 0452-35962/3

PERSONAL SERVICE ASSURED