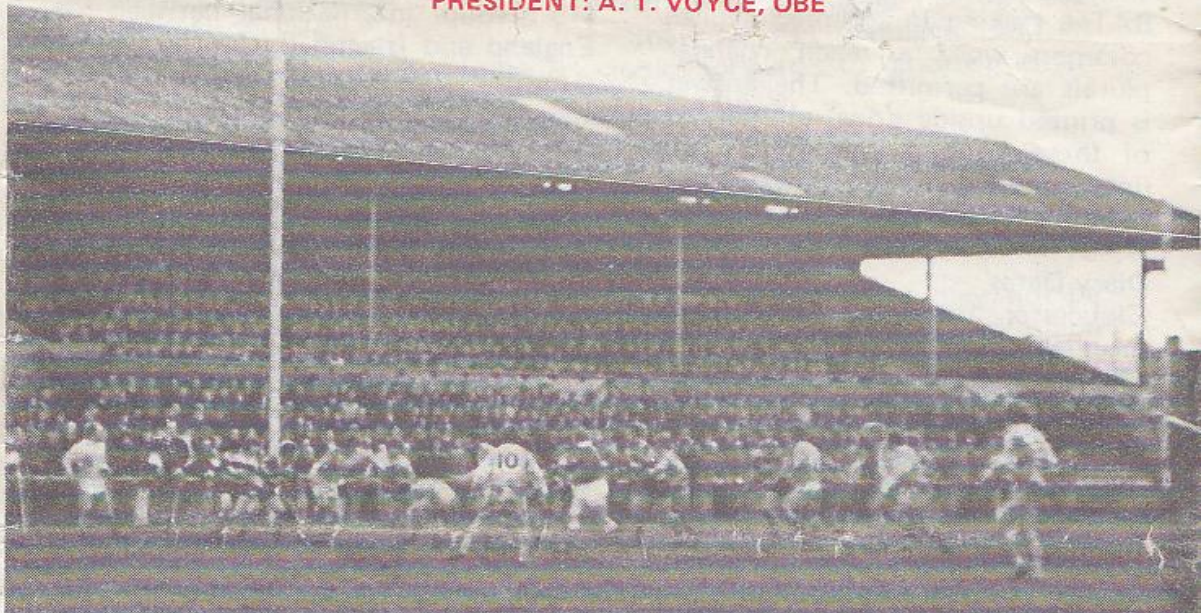




GLOUCESTER RUGBY FOOTBALL CLUB

Founded 1873

PRESIDENT: A. T. VOYCE, OBE



GLOUCESTER

v

BATH

WEDNESDAY, 23rd MARCH, 1977

at

KINGSHOLM · GLOUCESTER

Kick-off: 7.00 p.m.

Official Programme—6p



NORMAN P. PARTRIDGE (INSURANCE BROKERS) LTD.

1 BARTON STREET (corner of Clarence Street) GLOUCESTER
Telephone: 32088 and 34920

Free Advice
on all
Insurances.

GLOUCESTER

Cherry and White

- Full Back
15. **P. Butler** *†
- Three Quarters
14. **R. J. Clewes** *
13. **D. Pinton** *
12. **R. Jardine** *
11. **R. R. Mogg** *§
- Half Backs
10. **C. G. Williams** *†
9. **P. Howell**
- Forwards
1. **P. Blakeway** *§
2. **S. G. F. Mills** *
3. **M. A. Burton** *†
4. **S. B. Boyle** *§
5. **P. Winnell** *
6. **J. A. Watkins (Capt.)** *†
8. **E. Pinkney** *
7. **J. Haines** *
- REPLACEMENTS
F. Reed *
R. Etheridge *

Referee: D. M. ROBINSON (London Society)

- † International
§ Under-23 International
* County

First XV Fixtures

1976					
Sept. 4 (S) Broughton Pk.	H	31-6			
8 (W) Stroud ...	H	23-3			
11 (S) Coventry ...	A	12-11			
15 (W) Newbridge ...	H	18-13			
18 (S) Waterloo ...	H	14-10			
25 (S) Bristol ...	H	6-9			
29 (W) Cheltenham	A	62-7			
Oct. 2 (S) Bndford ...				H	35-14
6 (W) Ebbw Vale ...	A	4-22			
9 (S) Harlequins ...	H	9-14			
13 (W) Pontypool ...	A	18-0			
16 (S) Newport ...	A	4-30			
22 (F) Clifton ...	H	28-0			
27 (W)S. Wales Police	H	47-17			
30 (S) Oxford Univ.	A	24-13			
Nov. 3 (W) Bridgend ...				H	10-11
6 (S) Leicester ...	H	14-12			
10 (W) Cambridge Univ	H	4-4			
13 (S) Stroud ...	A	8-10			
20 (S) Aberavon ...	H	9-13			
27 (S) London Irish	A	7-16			
Dec. 4 (S) John Player ...				H	17-9
11 (S) Sale ...	A	C			
18 (S) Coventry ...	H	C			
26 Lydney ...	H	47-10			
(Boxing Day)					

First XV Fixtures

1977			
Jan. 1 (S) London Scott.	H	0-0	
8 (S) Leicester ...	A	28-10	
15 (S) Wasps ...	A	32-6	
19 (W) Army ...	H	18-14	
22 (S) Moseley ...	A	0-28	
26 (W) St. Lukes Coll.	H	P	
29 (S) Loughborough	H	26-3	
Feb. 4 (F) St. Lukes Coll.	H	26-3	
12 (S) John Player ...	H	12-3	
18 (F) Swansea ...	A	6-11	
26 (S) Llanelli ...	A	16-57	
Mar. 2 (W) Newport ...	H	6-3	
5 (S) Northampton	H	31-6	
9 (W) Cheltenham	H	52-0	
12 (S) John Player ...	A	0-3	
16 (W) Abertillery ...	H	51-4	
19 (S) Guys Hospital	H	80-10	
26 (S) Saracens ...	A	-	
30 (S) Newbridge ...	A	-	
Apr. 2 (S) Cardiff ...	H	-	
7 (T) Lydney ...	A	-	
9 (S) New Brighton	H	-	
(Easter Saturday)			
11 (M) Fylde ...	H	-	
(Easter Monday)			
16 (S) Sale ...	H	-	
19 (T) Nottingham	A	-	
23 (S) Exeter ...	A	-	
30 (S) Plymouth ...	H	-	

BATH

Blue and White

- Full Back
15. **J. S. Waterman** *
- Three Quarters
14. **J. Davies** *
13. **M. C. Beese** *†
12. **A. Smith** *
11. **G. Townsend** *
- Half Backs
10. **J. P. Horton** *
9. **R. Nicholls**
- Forwards
1. **G. Putney** *
2. **A. G. Parfitt** *
3. **J. M. Meddick** *
4. **R. J. Wheeler** *
5. **B. J. Jenkins** *
6. **R. Hill** *
8. **R. Lye** *
7. **C. Harry** *
- REPLACEMENTS
C. Bird
D. Spaven
R. Northcott

The First-Aid Service on this ground is provided voluntarily by The City of Gloucester Division, St. John Ambulance Brigade



WESTGATE motorhouse

DAIMLER * JAGUAR * ROVER * TRIUMPH

Telephone: 34581



CORDIAL WELCOME TO BATH

Undoubtedly among the most popular visitors to Kingsholm are our old friends and rivals, Bath, to whom we extend a very cordial welcome this evening; yet many supporters might have begun to wonder if the two clubs would manage to meet at all this season.

Both the original fixtures had to be postponed because of John Player Cup commitments – allied to the wretched weather. An alternative date was hurriedly arranged for the match at the Recreation Ground to be played on the New Year Bank Holiday but alas, as 'Doc' Durkin's favourite poet, Robert Burns, so aptly put it, "The best laid schemes o' mice an' men gang aft agley". The frozen pitch precluded any hopes of staging the match.

However, the respective fixture secretaries, like so many in these days of numerous representative matches and the Cup competition, have worked hard to fit re-arranged games into an already congested list, asking perhaps, like Hamlet of old, who would grunt and sweat under a weary life, hence the appearance of our good friends here tonight.

Bath have enjoyed a splendid season on their own ground, and until last Saturday week, when they succumbed to Swansea, boasted an unbeaten home record. But some of their matches have cost them dearly in injuries and last Friday, in their away game with Ebbw Vale, they suffered no fewer than five casualties. Happily, they expect at least three of them to be fit for this evening's match.

Last season's fixtures between the two clubs were also subject to switches in dates before they were

eventually fulfilled, but they brought a double success for Gloucester, who won at the 'Rec' by 18 - 15 on Saturday, December 13, 1975.

In the return game at Kingsholm on Tuesday, February 17, 1976, the Cherry and Whites were again successful, winning by 12 - 3. Bath, then, will be musing, like Shylock, "Shall we not revenge?" and we look forward to another entertaining tussle.

KINGSHOLM KACKLE

Scoring Sprees

While Guy's Hospital may not be top class opposition it was refreshing to see the lads again playing skilful and constructive rugby last Saturday in recording that runaway victory by 80 - 10, particularly after inflicting a 51 - 4 defeat on Abertillery a few days earlier. The Cherry and Whites are now within sight of 900 points for the current season!

Patrons' Night

A late reminder to Patrons that tomorrow night is their annual 'get-together' in the Social Club (8.00 for 8.30 p.m.). Those who have not yet obtained their tickets should contact the Club Secretary, Roy Long, at the office on the ground this evening.

300 Club Draw

On Friday evening, at 9.00 p.m., the fifth and penultimate draw of the *300 Club* this season will be made in the Social Club. The final one, which will include the large prize of £350. will be on Friday, April 29.

Word Change

Just as a 'refresher' to keep supporters' 'little grey cells' working, an innovation in these notes is the

introduction of a word change puzzle to occupy a few leisure moments before or after the match. The object is to turn one word into another by changing one letter at a time.

For example, LEFT can be turned into WING thus — Left; Lift; Life; Wife; Wine; Wing. Now, in *nine* changes, can you turn GLOS into BATH, making an accepted English common word at each change? plurals are permitted. The answer is printed upside down at the end of these notes — but don't look until you've swept away the cobwebs!

Diary Dates

Gloucester travel to London to meet Saracens next Saturday and are away again in a week's time, March 30, when they play Newbridge. On Saturday, however, Jim Jarrett's United lads entertain newcomers to Kingsholm in the Trojans, the leading Southampton club.

Next Wednesday, also at Kingsholm there is the National Fire Service International between England and Wales, while at the other end of the Golden Valley by-pass neighbouring

Cheltenham have a re-arranged match with Bristol at the Athletic Ground, the kick-off in both instances being 7.00 p.m.

On Saturday week, April 2, of course, is the big clash at Kingsholm against Cardiff (kick-off 3.00 p.m.), while on the following Wednesday evening, April 6, is another 'must' for the diary — the Schools (19 Group) international between England and Ireland (kick-off 7.15 p.m.).

Next Monday, March 28, brings the second round of the North Gloucestershire Combination Senior Cup, when the matches will be: Longlevens v. Gordon League; Gloucester Civil Service v. Hucclecote O.B.; Spartans v. Matson or Tredworth; Gloucester O.B. or Old Richians v. Chosen Hill F.P. (The matches are scheduled to be played on the grounds of the first-named clubs, all starting at 6.00 p.m.).

Arthur Russell

Answer to Word Puzzle

Glos: Glow; Blow; Blot; Boos;
Boss: Bass; Bats; Bath.

FOR ALL YOUR PROPERTY REQUIREMENTS

Roy Long & Partners

House, Land and Estate Agents

22 Worcester Street, Gloucester

Telephone: 0452-35962/3

PERSONAL SERVICE ASSURED