



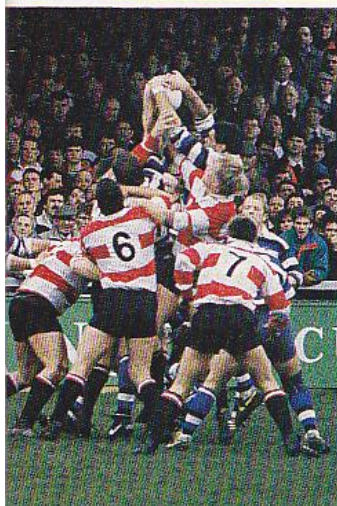
FOUNDED 1873

THE GLOUCESTER RUGBY FOOTBALL CLUB

President: Canon H. M. Hughes BA.

V

LYDNEY



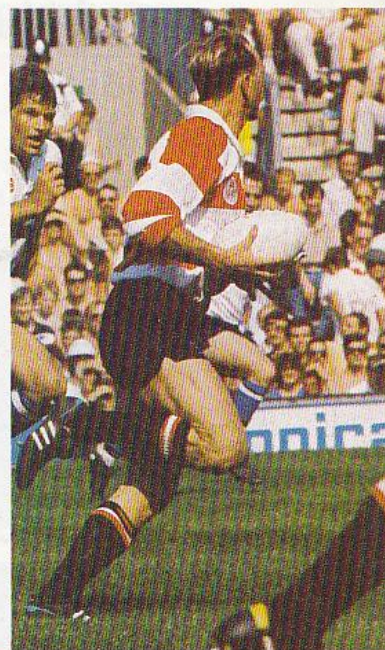
Wednesday, December 26th 1990

Kick-Off 3.00pm

KINDLY SPONSORED BY



OFFICIAL SPONSORS OF THE
GLOUCESTER RUGBY FOOTBALL CLUB



50p.
Official Programme

The Winner of today's
Official Programme
Draw will receive £10 from

Tyre Sales
Tyre Sales (Bham) Ltd.

1a Kingsholm Rd

616

Lucky Number

All kit used by
Gloucester Rugby Club is supplied by
COTTON OXFORD

Game sponsored by
BBC RADIO GLOUCESTERSHIRE

Gloucester Rugby Club use
GILBERT MATCH BALLS

GLOUCESTER (Cherry & White)

GLOUCESTER RUGBY FOOTBALL CLUB

LYDNEY

(Black & White)

T	G	Pts
	1	9

2		8

	1	2
1		4

1		4
1		4
1		4
1		4

29 H/T 3

15. M. Roberts

14. J. Perrins

13. D. Cummins

12. S. Davis

11. C. Dee

10. N. Matthews

9. L. Beck

1. A. Windo

2. D. Kearsey

3. R. Pascall

4. C. Guest

5. D. Sims

6. D. Spencer

7. D. Parry

8. B. Clark

Replacements:

I. Morgan

P. Miles

SPONSORED BY



Cumulative
Match
Score

4	0		
7	0		
7	3		
15	3		
17	3		
23	3		
29	3		
33	3		
35	9		
39	9		

Referee: D. LESLIE (Manchester Society)

15. A. Berry

14. M. Stubbs

13. R. Mills

12. D. Edwards

11. T. Bick

10. P. Morris

9. A. Bebbler

1. P. Davis

2. N. Nelmes

2. N. Macey

4. S. Hale

5. R. Yates

6. A. Knox (Capt.)

7. K. Davis

8. R. Carpenter

Replacements:

C. Wills

R. Smith

T	G	Pts

39 F/T 9

TOUCH LINES

by
Peter Arnold

LYDNEY BEANS

Our very welcome neighbours from over Westgate Bridge are full of beans, these days. After a shakyish sort of start, they are now handily established about half-way up their Division of the Courage Clubs Championship, and, in fact, my mole in the Lydney camp (thanks Ashley!), tells me that they only need one more win to ensure that they stay there for next season. You'll agree that this is a meritorious achievement, all things considered.

Of course, Christmastime games being what they are, the teams which actually run out on the field today are likely to be variable, not to say eccentric, but I'm also told that we could well have an interesting new player on view for Lydney today. He is a 22-year-old scrum half, his name is Chris Wills, and he comes from King Country, New Zealand. Apparently, he intends to play for the rest of this season, and with fair wind, hopes to come back next September.

We've had a fair few Kiwis, from All Blacks on down, playing at Kingsholm, for one reason or another, and one more is very welcome. If Chris isn't playing, he's likely to be here anyway, and if so, we hope he finds his visit to our famous old ground rewarding, interesting, hospitable and alcoholic.

We could, of course, say that about the whole of the West-of-Severn contingent. To paraphrase one of the James Bond books, 'nothing tradits like tradition', and the season simply wouldn't be the same without Lydney's Boxing Day visit.

One thing about playing Rugby — it's a great cure for a hangover. Of course, you might well acquire another one after the match, but *c'est la vie*.

Welcome again, Lydney. Hope you have a great visit.

THANKS TO BBC RADIO GLOUCESTERSHIRE

Our generous match sponsors today are BBC Radio Gloucestershire. The idea is that, having been presented with opportunities for great sports coverage by the doings of Gloucester RFC, they thought they'd like to say 'Thanks', and hope things

continue in the same vein.

That cuts both ways, of course. Having been prevented by circumstance from travelling away for a few important games, I have found John Hawkins' match commentaries informative and evocative. It's great to have full coverage of a crunch match on your own local radio station, and for all of us not able to get along, 'Saturday Live' provides about the best consolation for non-attendance one could have.

In fact, Radio Gloucestershire is going great guns, these days. As Station Manager, Peter Gallimore, is very happy to admit, they didn't really get off the ground as quickly as everyone might have liked; however, things have now taken off, the figures are looking encouraging, and everyone is working very hard to ensure that we get an absolutely tip-top, genuinely local service.

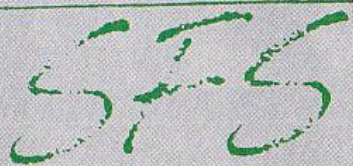
As far as Rugby coverage is concerned, for Gloucester and local clubs, I think it's fair to say that the objective has been achieved. Long may it continue to be so.

Thanks, once more, to BBC Radio Gloucestershire, for their generosity today, and for the attention they pay to us throughout the season. It's also worth pointing out that radio station people, like policemen, ambulance drivers and other unfortunate souls, have to continue to work, be it Boxing Day, Christmas Day or August Bank Holiday Thursday. Our sponsors today, however, are at least, functioning in reasonably congenial surroundings. We hope they feel able to let their hair down a little while they're with us.

VIVA ESPANA!

In the general flurry of the Divisional Match, the Pilkington Cup Draw and other contemporaneous happenings, I for one, have tended to forget that the England 'B' side is scheduled to play Spain on Sunday, January 20th. What's more, the game takes place right here at Kingsholm, kick-off 3.00 p.m. Which immediately raises the question 'What about tickets?' I will now, as they say, Reveal All.

S · E · L · E · C · T



FEEDS & SEEDS

By appointment to GRFC and also
suppliers of grass seed to
Cinderford and other Rugby Clubs

* Suppliers of all lawn seeds *

* Large or small orders catered for *

Contact Bob Osborne on 0452 76511
or 0860 590330 (Car)

Centre Stand will cost you £7.00, Wing Stand is a little more modestly priced at £5.00, but seats are unreserved. Ground admission is £3.00, and this time, Ground tickets will be available, although you could chance it and pay at the gate if you prefer.

There's also a rather nice special deal for parties of juniors, who are defined as people under 16. Anyone running a party from a bona fide organisation — Mini Rugby teams, Youth Clubs, Schools for example, can receive supplies of tickets at just £1.00 a head. The RFU haven't actually let us have the tickets yet, but that doesn't necessarily stop you dropping a line, complete with money and stamped, addressed envelope, to David Foyle. It's hoped that tickets will be available on the ground, from the day of the London Scottish match, January 5th, onwards.

You may know more by now, but at the time of writing, the England 'B' team hasn't been announced, but I suppose there's a good fighting chance that Gloucester might be represented. A consummation devoutly to be wished. However, it should be a worthwhile occasion. And, if your conscience pricks you, you can always nip off to church afterwards.

PILKINGTON

You'll also want to know about the Pilkington Cup game against Harlequins on Saturday 26th of January. Usual Cup prices: £5.00 Centre Stand, £4.00 Wing Stand, unreserved, and Ground tickets at £3.00 — note that, unlike last time, there will be Ground tickets available.

Again, send your remittance to David Foyle with SAE, or wait until January 5th, when tickets will be available at the ground.

There's a restriction, however. Harlequins have already requested their full allocation of Stand tickets, which cuts down the number available to the rest of us. Therefore, Stand tickets will be available to Stand Season Ticket holders only, at the rate of one per Member, until Monday, January 21st, after which, it's first come, first served.

Do remember, also that, under the rules of the competition, Pilkington Cup games are 'all pay' affairs and that includes the car park.

NOT FINISHED YET

There are still a couple of holiday games to go. On Saturday, the First XV are at home to Bridgend, which is always a tough proposition. Our traditional New Year's Day game against Moseley is an away fixture this season, but the Reddings ground is not so far away that it wouldn't make a happy little trip out.

Then, on Saturday, January 5th we have our usual visit from London Scottish, and with the number of Gloucester players qualifying for Scotland these days, that game begins to look a bit incestuous.

We shan't be seeing anything of the United over that period, although they're away to Moseley next Saturday. The next time they display their considerable talents at Kingsholm will be on January 12th when they take on — would you believe — Harlequins, which should be interesting, to say the least.

SEASONAL GOOD WISHES

The way the fixture list has worked out this year, I haven't been able to convey appropriate Christmas Greetings until the holiday is nearly over. That doesn't mean, however, that the wishes expressed by Officers, Committee and Players are any less sincere.

No one knows better than you the special 'personality' of Gloucester RFC. Different clubs and individuals in different parts of the country will have their own opinions about that, but one thing's for sure — the supporters have as much to do with the sheer individuality of our great old club. Everyone thanks you for that, and hope all your Christmases will be merry.

TAILPIECE

Came across an appropriate quotation from J. B. Priestly the other day.

'A good holiday is one spent among people whose notion of time is vaguer than yours'.

Gets a bit like that in the bar most Saturdays, actually.

ONE FIRST CLASS TEAM SUPPORTING ANOTHER



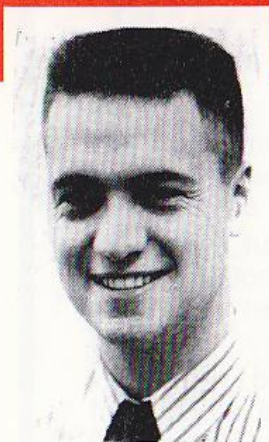
**Lloyds
Bank**

THE THOROUGHBRED BANK.

TALKING RUGBY

with

Mike Harris



Old rivals Lydney will be as anxious as ever to put one over neighbours Gloucester this afternoon.

Like the Cherry and Whites, Lydney haven't been having it all their own way in the league this season and are currently seventh in National Division Three with three wins from seven league games.

But the Severnsiders are sure to put in a totally committed performance while the rest of us recover from the Christmas excesses of turkey and mince pies.

Today's match is Gloucester's first home game for nearly four weeks but there are several interesting contests in prospect at Kingsholm over the next few weeks.

On Saturday the Cherry and Whites entertain top Welsh side Bridgend while next month Gloucester have London Scottish and Blackheath at home before the star-studded Harlequins side come to Kingsholm in the fourth round of the Pilkington Cup on January 26.

With internationals throughout their team the 'Quins will probably start as favourites for that tie but it will be interesting to see how the city slickers cope with a Gloucester side sure to be playing in front of the biggest Kingsholm crowd so far this season.

COURAGE CLUBS CHAMPIONSHIP DIVISION ONE

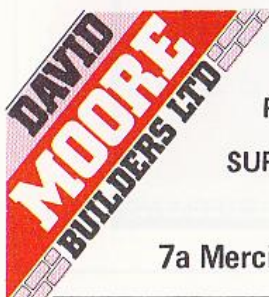
	P	W	D	F	A	Pts
Bath.....	6	6	0	121	31	12
Harlequins.....	7	5	0	153	78	10
Leicester.....	7	5	0	140	66	10
Orrell.....	6	4	0	167	42	8
Wasps.....	6	4	0	89	74	8
Rosslyn Park.....	7	4	0	88	92	8
Gloucester.....	6	3	0	100	83	6
Nottingham.....	6	3	0	67	89	6
Northampton.....	6	3	0	66	125	6
Bristol.....	7	2	0	66	108	4
Saracens.....	7	2	0	81	147	4
Moseley.....	6	1	0	63	116	2
St. Helens.....	7	0	0	53	203	0

DIVISION TWO

	P	W	D	F	A	Pts
London Irish.....	7	6	0	168	120	12
Rugby.....	6	5	0	135	64	10
Wakefield.....	7	5	0	120	61	10
London Scottish.....	7	4	0	133	97	8
Newcastle Gosforth.....	6	4	0	76	56	8
Coventry.....	6	4	0	84	73	8
Sale.....	7	3	1	133	73	7
Waterloo.....	7	3	0	93	127	6
Richmond.....	6	2	0	84	138	4
Headingley.....	7	2	0	60	149	4
Bedford.....	6	1	1	58	121	3
Blackheath.....	6	1	0	71	98	2
Plymouth Albion.....	6	1	0	74	111	2

DIVISION THREE

	P	W	D	F	A	Pts
West Hartlepool.....	7	6	1	165	66	13
Clifton.....	7	5	0	123	91	10
Morley.....	7	4	1	99	74	9
Sheffield.....	6	4	0	112	81	8
Broughton Park.....	7	4	0	72	83	8
Exeter.....	6	2	2	79	89	6
Lydney.....	7	3	0	90	101	6
Askeans.....	6	2	1	71	73	5
Fylde.....	6	2	1	64	74	5
Roundhay.....	6	2	0	65	88	4
Nuneaton.....	6	2	0	81	113	4
Metropolitan Police.....	7	2	0	61	113	4
Vale of Lune.....	6	1	0	76	112	2



ALL TYPES OF BUILDING & REPAIRS UNDERTAKEN
PLUMBING AND CENTRAL HEATING DECORATING
SUPPLIERS & INSTALLERS OF MOST KITCHEN FURNITURE
& APPLIANCES

7a Mercia Road, Gloucester.

Tel: 0452 414000