



FOUNDED 1873

# THE GLOUCESTER RUGBY FOOTBALL CLUB

President: Canon H. M. Hughes BA.

## v HARLEQUINS



Saturday, April 27th 1991  
Kick-Off 3.00pm

KINDLY SPONSORED BY

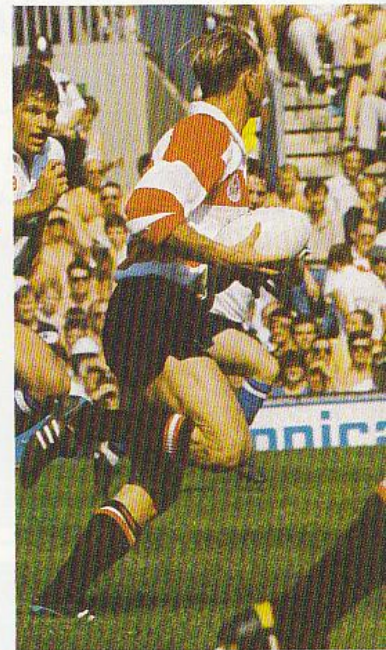
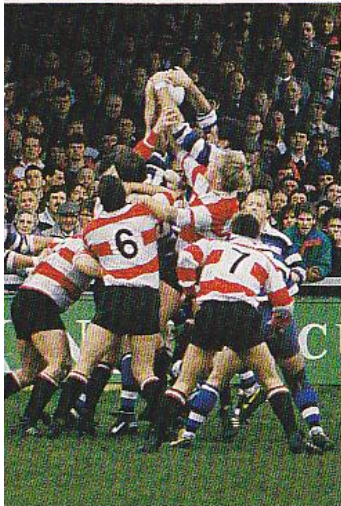


OFFICIAL SPONSORS OF THE  
GLOUCESTER RUGBY FOOTBALL CLUB

The Winner of today's  
Official Programme  
Draw will receive £10 from



1a Kingsholm Rd



50p.  
Official Programme

380

Lucky Number







# TOUCH LINES

by  
Peter Arnold

## SAVING THE BEST FOR LAST

And what's more, it's a second helping! Few people would argue that 'Quins visit to Kingsholm in January produced one of the most exciting matches of the season. From being twelve points down, Gloucester came back to such effect that a minute or two's more injury time could have reversed the result. Having said that, I think I'd admit that Harlequins just had the edge on the day; after all, you can't give a side of that quality twelve points start and expect to win.

As we all know, that was the day when Gloucester lost interest in the Pilkington Cup. As for the Final, I'm sure we'd all want to wish Harlequins the best of luck next Saturday. While there must be a little sentiment in favour of the happily resurgent Northampton side, it would be nice if we could say that, yet again, we were beaten by the eventual winners of the Competition.

League points are at stake today, of course, and although the result won't affect the Championship, it's worth remembering that Gloucester have now lost their last three Courage games, and there's a little bit of pride at stake. While Gloucester never whimper, it would be nice to go out with a bang.

Quite apart from all that, the visit of Harlequins is always a special occasion. Our two Clubs have been trying conclusions, almost since William Webb Ellis, and in some ways, such traditions are more important than mere Cups and Championships. The structure of the game changes and evolves with the times, but as long as fixtures like this one persist, they will always be the backbone of the greatest winter game of all.

Sorry about that. The end of another season always makes me a bit philosophical. And one such piece of philosophy is that any side visiting Kingsholm should have a thoroughly enjoyable visit, win lose or draw. I hope and expect that Harlequins will find that the case today.

## THANKS TO TEWKESBURY PRINTING

It's only right to express gratitude to our generous

Sponsors, but when sponsorship of a major game falls by the wayside about ten days before the event, we're positively overjoyed when a completely new benefactor leaps into the breach at infinitesimal notice.

That's what's happened today. We all understand why Dowty felt they must withdraw, and sympathise with their dilemma, but it has given us the opportunity to make acquaintance with Tewkesbury Printing, a Company barely six years old, which is already making a considerable impact in a notoriously difficult field. They're based in a modern factory, just off the M5 at Tewkesbury (naturally), and attribute their success, quite simply, to a very high level of service.

Managing Director, Peter Siddall writes "Our business has been built up on personal relationships and personal service. Happy and satisfied clients increase our business." Seems logical to me.

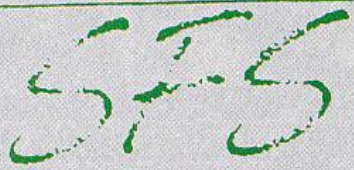
Summing up, Tewkesbury Printing 'specialise in producing quality print, at a competitive price, and delivering the work on time'. That's the strategy. The tactics are to use a high level of print and process technology, including computerisation, at the fingertips of experienced, qualified and committed staff, to achieve that aim. The success of the company so far is a fair indication that the philosophy works.

Peter Siddall again: "We want you to keep coming back to us." A worthy ambition, with which we heartily concur. Have a great day, Tewkesbury Printing. Thanks again — and keep coming back to us.

## WELCOME HOME

As you may have read in the Press, Mike Burton was instrumental in persuading Tewkesbury Printing to support us today at such short notice. More accurately, his company was. The distinction is important, and we don't particularly want to go into details now. Indeed, Mike Burton Management don't become involved, officially, until next Wednesday, so today's effort is above and beyond the call of duty. But then, 'Burto' was always one for

S · E · L · E · C · T



FEEDS & SEEDS

By appointment to GRFC and also suppliers of grass seed to Cinderford and other Rugby Clubs

\* Suppliers of all lawn seeds \*

\* Large or small orders catered for \*

Contact Bob Osborne on 0452 76511  
or 0860 590330 (Car)



making things happen.

Thanks for that, Mike, but my main point, today, is to welcome one of the finest prop forwards any of us has seen back to Kingsholm. No one ever loved Gloucester RFC more than he does, and it's great to see him back where he belongs.

#### LAST CHANCE

The date for applications being next week, you just about have time to do something about World Cup tickets, should you feel so inclined. The only way to get an application form is to write to the World Cup Ticket Office, here at Kingsholm, asking for an Application Form, which will give you full details. Don't forget to include your Membership Number.

It's worth reiterating that the All Blacks game against the United States, here at Kingsholm, is beyond the control of Gloucester RFC. We're not organising it in any way at all, so don't have any influence over the ticket allocation. Terry Tandy's estimate is that we shall get about eighty tickets, top whack, so pot luck is the name of the game. Still, if you don't apply — one ticket per Member — then you have no chance at all, do you?

#### WELL DONE, EVERYONE!

You'll remember the collection made at the Bath game, for the benefit of the young Bath Colt, confined to a wheelchair after breaking his neck against Nottingham, in a game witnessed by many Gloucester supporters. I'm delighted — but not particularly surprised — to be able to tell you that Gloucester RFC were able to send a cheque to the Trust Fund for no less than £2,000, as a result.

Actually, the collection raised £1990-something, but it would have been cheese-paring in the extreme not to have made it up to the round figure. The generosity of the sometimes-abused Kingsholm crowd in such circumstances is legendary, and this time, you certainly enhanced that reputation. Thanks to everyone.

#### CHEERS TO 'HAMBO'

I see that Mike Hamlin has decided not to stand for re-election as Club Captain for next season. I can understand his reasons; two years in the job, these

days, is a sufficient stint for most people, and 'Hambo' has had a tough couple of terms, during which, I would remind you, he led us to a Cup Final and second place in the League Table — while also turning out, on occasion, for the Division and England 'B'.

He has served the Club well, bringing good sense and even some dignity to the job. A nicer bloke never pulled on a cherry-and-white strip. He still has a great deal to offer, in terms of playing, advising and sheer example to young players in how to maintain the spirit of the game.

He'll be a hard act to follow, and next season's Ground Centenary provides his successor with a particularly testing challenge. Luckily, we don't have to wait long to find out who that will be, the Players' Meeting to decide such matters being as early as next week. I've heard three or four names bandied about, but the decision is entirely in the hands of the lads, which is as it should be. We all wish them success in their deliberations, and wait with breath bated.

#### THANKS ALL ROUND

If I were to try to list all the people and organisations worthy of our gratitude at this stage of the season. I would be sure to offend someone by leaving them out. So I won't try, merely contenting myself with saying that we really are grateful to everyone who has helped in the kaleidoscope of jobs which need doing, year after year. The Club simply couldn't function without you.

I will make one exception, however, Peter Gould and John Hiley have been organising Sponsorship at Kingsholm for some seasons now, purely for the love of it. They also organise the very programme which you are reading, also simply to help the Club.

I assume that those functions will now be taken over by the new Management Company, so it's only right to express thanks to Peter and John for their sterling efforts over the years. It's been great working with them.

#### TAILPIECE

Of course, I could be out of a job myself. I leave it to you to decide whether that's a blessed relief or not. Meanwhile, Summer well.

## ONE FIRST CLASS TEAM SUPPORTING ANOTHER



THE THOROUGHBRED BANK.



# TALKING RUGBY with Mike Harris



Gloucester's season has trailed off over the last month with three consecutive Courage League Division One defeats and they badly need a win today to finish the season on a high note.

Compared with the achievements of last season when Gloucester came second in both the league and the cup, the 1990/91 campaign must be seen as a disappointing one.

But the Cherry and Whites are very much a team in a period of transition. Several players reached the peak of their powers last year and this season the club have been hit by injury problems and defections of players to other clubs.

Gloucester are fortunate, however, in having a large number of promising young players in the firsts and the United side and the club can be justifiably optimistic about the future.

In this respect the season's most notable success story has been the selection of athletic lock forward Dave Sims and outstanding fly-half prospect Neil Matthews for the England under 21 side.

And other players such as exciting winger Chris Dee, who faces Harlequins today, mobile prop Tony Windo, and Gloucestershire under 21 scrum-half Laurie Beck are sure to play a big part in Gloucester's future.

Of more immediate importance is this afternoon's match which Gloucester want to win to avenge their defeat against Harlequins in January's classic Pilkington Cup tie.

Unfortunately the London club have decided to rest all their star names because of their Pilkington Cup final appearance against Northampton next weekend. But the side facing Gloucester today includes most of the team that beat Leicester in the league last month and should therefore not be underestimated.

### COLTS XV FIXTURES

1990					
SEPT.	6	Coventry	---	A	0-19
	12	Moseley	---	A	21-17
	19	Clifton	---	H	37-6
	26	Forest of Dean	---	H	29-15
OCT.	10	Lydsey	---	H	14-5
	17	Nunaton	---	A	22-9
	24	Bath	---	H	15-9
NOV.	10	Northampton	---	A	11-10
	17	Worcester	---	H	23-14
1991					
FEB.	20	Nunaton	---	H	15-7
MAR.	6	Lydsey	---	A	6-19
	13	Moseley	---	H	27-3
	20	Coventry	---	H	5-11
	27	Worcester	---	A	10-15
APR.	3	Solihull	---	H	3-16
	13	Brixham	---	A	44-0

P	W	D	L	F	A
16	11	0	5	278	173

Leading points scorers:  
Gareth Fawcett 70 (18C 10P 1T), Bruce Harris 44 (11T),  
Chris Theyer 24 (6T), Leigh Hastings 16 (4T), Nick Young 16 (4T).

**DAVID MOORE BUILDERS LTD**

ALL TYPES OF BUILDING & REPAIRS UNDERTAKEN  
PLUMBING AND CENTRAL HEATING DECORATING  
SUPPLIERS & INSTALLERS OF MOST KITCHEN FURNITURE & APPLIANCES

7a Mercia Road, Gloucester. Tel: 0452 414000

# PLAYING RECORD

FIRST XV FIXTURES				UNITED XV FIXTURES									
1990	SEPT.	1	Swansea	---	H	4-14	1990	SEPT.	1	Glamorgan Wdrs	---	A	19-33
		5	Clifton	---	H	64-3			15	Pontypool	---	H	66-4
		8	Neath	---	A	10-17			22	Bath	---	H	49-10
		11	Stroud	---	A	48-0			25	Cheltenham	---	A	43-9
		15	Pontypridd	---	A	38-15			29	Creddon	---	A	26-0
		22	*Leicester	---	A	6-18	OCT.	6	Bedford	---	A	35-12	
		26	Newport	---	A	10-15			13	Northampton	---	A	Can.
		29	Ebbw Vale	---	H	45-3			20	Wassps	---	H	60-6
OCT.	3	Exeter University	---	H	46-0			27	Rugby	---	A	51-10	
		31	South Wales Police	---	H	30-12			30	New Zealand Yugoslavs	---	H	0-16
		13	Plymouth	---	H	72-3	NOV.	3	Pontypool	---	A	23-15	
		16	Cheltenham	---	H	45-0			10	Leicester	---	H	53-1
		20	*Wasps	---	A	9-14			17	Bristol	---	A	17-31
		27	*Nottingham	---	H	22-6			20	Caldicot	---	H	30-3
		31	South Wales Police	---	H	59-4			24	Saracens	---	H	30-6
NOV.	3	Bristol	---	H	28-4			28	Cinderford	---	H	37-10	
		10	*Rosslyn Park	---	A	12-17			1	Leicester	---	A	28-19
		17	*Saracens	---	H	21-16	DEC.	1	St. Pauls College	---	H	41-3	
		24	Broughton Park	---	H	52-0			8	Cardiff	---	H	Can.
DEC.	1	Leicester	---	H	18-15			15	Coventry	---	H	34-0	
		8	Rugby	---	A	Can.			22	Newport	---	H	40-9
		15	Coventry	---	A	26-7			29	Moseley	---	A	26-6
		22	Exeter	---	A	36-9	1991						
		26	Lydsey	---	H	39-9	JAN.	5	Berry Hill	---	A	38-0	
		29	Bridgend	---	H	20-7			12	Harlequins	---	H	32-0
1991									19	Newport	---	A	24-10
JAN.	1	Moseley	---	A	20-10			26	Nottingham	---	A	33-9	
	5	London Scottish	---	H	17-10	FEB.	1	Bristol	---	H	19-12		
	12	*Liverpool St. Helens	---	A	26-7			9	Coventry	---	A	Can.	
	19	Blackheath	---	H	38-4			13	Newport H.S.O.R.	---	H	Can.	
	26	Pilkington Cup 4th Round	---	H	13-15			16	Cleeve	---	A	37-19	
FEB.	1	Newbridge	---	A	Can.			19	Cheltenham	---	H	Can.	
	9	*Bath	---	H	Post.			23	Rosslyn Park	---	A	6-21	
	15	Newport	---	H	20-3			27	Museley	---	H	Can.	
	23	Richmond	---	H	18-8	MAR.	2	Nunaton	---	H	Can.		
	9	*Northampton	---	A	24-21			9	Northampton	---	H	40-4	
MAR.	2	Pontypool	---	A	7-6			16	Richmond	---	A	A	
	9	*Northampton	---	A	7-6			19	Richmond	---	A	60-26	
	12	Lydsey	---	A	38-3			23	Orrell	---	A	Can.	
	15	Aberavon	---	H	36-6			6	Garriffaith	---	H	H	
	23	*Orrell	---	H	9-16			13	Rugby	---	H	H	
	26	Cheltenham	---	A	58-3			20	Salé	---	H	62-4	
	30	New Brighton	---	H	54-6			27	London Irish	---	A	A	
APR.	1	Fylde	---	H	30-3								
	6	Bath	---	H	15-7								
	13	*Bristol	---	A	13-15								
	20	Bath	---	A	19-32								
	27	*Harlequins	---	H									

\* John Courage Club League Fixtures

FIRST XV	P	W	D	L	F	A	UNITED XV	P	W	D	L	F	A
	42	31	0	11	1171	387		30	25	0	5	1005	310

Leading Points Scorers  
First XV — T. Smith 232(51C 38P 4T); N. Marment 105 (14C 3P 17T); M. Roberts 68 (19C 6P 3T); M. Hamlin 56 (7T 5P 5C 1DG)  
United — M. Roberts 215 (60C 25P 5T); D. Parry 60 (15T); N. Matthews 44 (11T); C. Dee 44 (11T); J. Perrins 40 (10T)

Where To See The Best Kitchens, Bathrooms and Bedrooms In Gloucestershire

\* SIEMATIC \* NEFF \* FRANKIE \* SELLES

**MASTER PIECES**  
Now dimensions in Gloucester

ST. OSWALDS RD. GLOUCESTER (0452) 423261