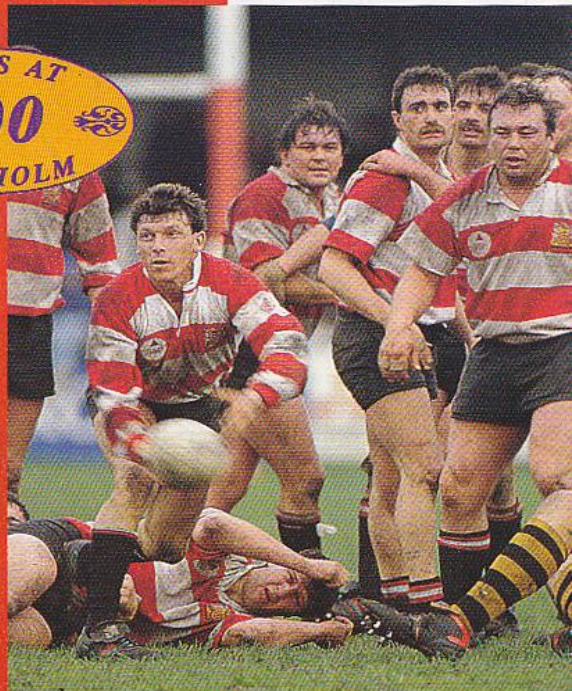
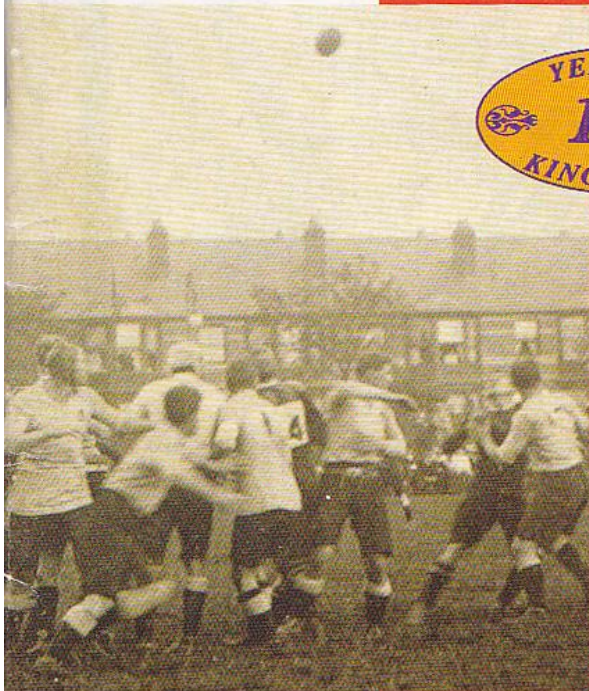


THE
GLOUCESTER
RUGBY FOOTBALL
CLUB

V
STROUD

YEARS AT
100
KINGSHOLM



80p.
Official Programme



FOUNDED 1873
President:
Canon H. M. Hughes BA.

Tuesday, September 3rd 1991
Kick-Off 7.00pm

MATCH KINDLY SPONSORED BY



OFFICIAL SPONSORS



Gloucester Rugby Club use
GILBERT MATCH BALLS

STROUD

(Blue and White)

T	G	Pts
---	---	-----

F/T		

- | | |
|-----|-------------|
| 15. | A. Westley |
| 14. | B. Pearce |
| 13. | M. Joy |
| 12. | J. Harry |
| 11. | L. Hathaway |
| 10. | M. Kimber |
| 9. | G. Shipton |
| 8. | |
| 7. | |
| 6. | |
| 5. | |
| 4. | |
| 3. | |
| 2. | |
| 1. | |

Replacements:

Cumulative
Match
Score[illegible]

Referee: A. ROWDEN (Berkshire Society)

TOUCH LINES

by
Peter Arnold

WHAT DO YOU THINK OF IT SO FAR?

Welcome back.

Welcome to a new Season.

Welcome to a new Century of Kingsholm

Welcome to a new Programme.

I say a 'new' Programme, although we've tried to retain the more popular features from previous seasons, and added one or two more which you might enjoy. There's a quiz, short, but long enough, we hope, to keep you interested while waiting for the action to start, and an attempt to unfold some of the events of that first Kingsholm season in 1891/2. I've also got room for a more self-indulgent 'Tailpiece', and I'm sure that my old mate Ed Martin's facts and figures page will soon become a highlight of the whole effort. We have, over the years, acquired something of a national reputation for our Programme, but everything in the game is changing, and that includes the nature of club publications, so we do our humble best to set the trend, rather than just follow it.

One thing which hasn't changed, thank goodness, is the Opposition for the Season's first game. Personally, I can't think of a more appropriate side to open hostilities than Stroud, who were not only founded in the same year as Gloucester, but also played very early in the history of Kingsholm. Last season, we visited Fromehall Park — comparatively late, actually: September 11th — and were discourteous enough to plunder our hospitable hosts to the tune of 48 points. As you well know, however, the scoreline isn't the be-all and end-all of these games, good relations with neighbouring clubs, whatever their on-paper strength, being an end worth pursuing in itself.

It's also worth mentioning that Stroud can now number the great John Gadd amongst their players. He has his injury problems, but it's all Twickenham to a second-hand jock-strap that his immense experience and technical expertise will have a huge influence on the way Stroud play the game, even if John can't get out on the field himself all that often.

We wish him well. As we do the Stroud club for the ensuing season. Nice to see them here to open our most momentous campaign ever. Stroud, Swansea, England, Irish President's XV, Neath... surely no club

has ever had a more testing opening to a season. It's good that our neighbours from up the road are part of it.

WELCOME GERALDINE

Som would say that it's time Gloucester RFC had a feminine influence among the management, and now we have, in the attractive shape of Mrs. Geraldine Peake, who is helping out on the administrative side. That doesn't mean she's just a clerk: she's firmly established in her new office, just outside the main turnstiles, and will be open for business there between 10.00 a.m. and 2 p.m., Mondays to Fridays. She'll be there to sell you tickets — Season or otherwise — and also to handle queries and enquiries of all sorts (hope she knows what she's got herself into). You can, of course, make such enquiry by phone. Geraldine's number is 0452 381587.

As a matter of interest, Terry Tandy's Secretary's office is now in the same location. The under-stand area has now been given over entirely to the affairs of the players, and Club Coach, Keith Richardson, now occupies Terry's old domain. At the risk of being insulting, I can't resist the remark that he'll probably find it more roomy than the substantial Mr. Tandy.

Be that as it may, it obviously makes sense for such matters to be dealt with in such a way that you don't have to enter the Ground to attend to them, and the new system should work well, given time to shake down.

THANKS TO BBC RADIO GLOUCESTERSHIRE

Our first generous Sponsors of the Season aren't new either. Just new-ish, although, personally, I was surprised to learn that BBC Radio Gloucestershire has now been 'on air' for almost three years, which is a very short time in which to achieve the voice of authority in the area which it undoubtedly has. And that's not just the Station Manager, Peter Gallimore talking. The latest officially-produced set of audience figures shows that our own Radio Gloucestershire has the fastest-growing audience of any local radio station in the country.

The station itself attributes its success to — and I quote from Peter Gallimore — 'our commitment to local current affairs, news and sport, plus the best in music'. It's only appropriate here to comment on the

S • E • L • E • C • T

SFS

FEEDS & SEEDS

By appointment to GRFC and also
suppliers of grass seed to
Cinderford and other Rugby Clubs

* Suppliers of all lawn seeds *

* Large or small orders catered for *

Contact Bob Osborne on 0452 760511
or 0860 590330 (Car)

MORE TOUCH LINES

Rugby aspect, and I'm sure that most of us would heartily agree that their coverage of Gloucester RFC is excellent. At least John Hawkins always seems to be watching the same game that I am.

Mr. Gallimore continues: 'Tonight's match, the start of an exciting season for Gloucester, underlines BBC Radio Gloucestershire's commitment to coverage of local sport. This year is World Cup year, and we will be giving full live match commentary at the eagerly-awaited visit of the All Blacks on October 8th, as well as covering the Cherry and Whites both home and away throughout the season.'

'I regard coverage of Gloucester RFC as being one of our essential core sporting activities.' (no argument from us, there) 'and our sports team led by Graham Day are here every Saturday to reflect the atmosphere of the famous Ground. I'm proud that we're here to enjoy the new, upgraded facilities at the start of the Centenary Season.'

He goes on to point out that BBC Radio Gloucestershire has electronic links to newsrooms throughout the country, and the backing of the unique sporting expertise of the BBC throughout the country. 'You can rest assured that, if it's happening in sport in Gloucestershire — we'll bring it to you first'.

You can hear Graham Day in 'Saturday Live' every week between 2.00 p.m. and 6.00 p.m. on Medium Wave 603, with previews of the weekend sporting action on 'Touchline' (where have I heard that phrase before?) on Friday evenings at 5.30 p.m. Thanks for everything Peter, Graham and everyone else. And that includes all the coverage you give us, as well as your generous support for tonight's opening salvo. We'll be listening.

TICKETS

Talking of salvos, there's a fair old fusillade of information about tickets this evening. Let's start with Season Tickets. Following the AGM, Grandstand Seasons cost £60.00 (£30.00 for Senior Citizens and Juniors), Ground tickets, £30.00 (£15). Please note,

that the distinction between Wing and Centre Stand has now been abolished. After all, the seats in the Wings have now been upgraded, and you get a good view wherever you sit. They'll be on sale in the Social Club Lounge before the match, and the new office afterwards.

Tickets for the England and Ireland games are on sale now at £8.00 for the Stand, £6.00 in temporary stands, erected for the occasion, and £4.00, Ground. Grandstand season ticket holders only, for now, for the £8.00 version.

For the World Cup match, the rules only allow us to sell them from today onwards. As you'll imagine, the few stand tickets we have will have to be allocated, and there are a lot of written applications in already, but you should be able to get a ground ticket if you're quick about it.

Applications for Home International tickets have to be in by October 8th, and members can get an application form from the new office.

Phew! I'm glad I got that lot off my chest!

TEA, ANYONE?

We'd be glad to hear from any ladies who would like to give a hand with preparing players' teas on match days. This is accomplished in teams of four, and experience tends to show that groups of friends like to get together to do the job. Any volunteers? Contact Jackie Etheridge on Gloucester 856335, or Jane Barton, on 416809. After all, we can't have the lads going hungry, can we?

BURTO'S GOLD BOND

You'll probably have read about the Gold Bond lottery to be launched by Mike Burton's MBM Sports Management company at the end of the month. In fact, you should have been handed a leaflet about it on your way in. Chance of £100, daily, for an investment of 50p. Can't be bad. However, the point is that we could always do with some more Agents to sell the system. Interested in reaping some benefits? Contact David Golder on Gloucester 419666.

ONE FIRST CLASS TEAM SUPPORTING ANOTHER



**Lloyds
Bank**

THE THOROUGHBRED BANK.

FACT FILE

Stroud paid their first visit to Kingsholm for the final game of the 1892-1893 season. And they edged the Cherry and Whites 5-2. It was the eighth loss to be suffered by Gloucester at Kingsholm.

Three seasons later, Stroud paid their second visit, with Gloucester winning 6-0. All told, Stroud came to Kingsholm six times last century. Gloucester won all but that first fixture to close out the 1890s against Stroud at Kingsholm with five wins and one loss, scoring 63 points and letting Stroud score just 13 points.

There was an even better record when visiting Stroud. Gloucester won all five meetings scoring 93 points to Stroud's six.

Stroud had to wait until the war shortened the 1939-1940 season before claiming their second win at Kingsholm. Gloucester fell 11-6 (Stroud completed their only double against Gloucester that season when they won 11-7 in Stroud).

Stroud's only other wins at Kingsholm were in 1946-47 (8-3) and 1949-1950 (5-3).

The first decade at Kingsholm, Gloucester had a winning percentage of 75.95 (draws counting as half a win). 185 games were played in the first ten years, 131 of them won, 36 lost and 19 drawn. Gloucester outscored their opponents by a ratio of 3.5 to one. 1981 points were scored by the Cherry and Whites, with the opponents scoring 553.

Biggest win of the decade was the 66-0 demolition job of Clifton in the opening game of the 1900-1901 season (poor Clifton were hammered 54-3 in the return match in Bristol). Gloucester also posted a 50-0 win against Weston-Super-Mare in 1897-1898 season. On the other side of the coin, the biggest home loss suffered by Gloucester in the same period was the 30-3 embarrassment handed out by Newport in the 1895-1896 season.

The 30 points scored by Newport and the 30-0 away loss to Swansea helped to make up one of the few Gloucester seasons best forgotten. In the 1895-1896 season, Gloucester were outscored 167-140 by their opponents in all home and away matches. An average of just 5.19 points a match were recorded in the 27 outings — this is the worst season ever for scoring by the Cherry and Whites. By the spring of 1896, Gloucester had lost 12 matches, winning just nine, with six drawn. Sixty years were to pass before the winning percentage of the Cherry and Whites fell below the 50 mark to make them a losing team for the season.

Statistics compiled by Ed Martin

BACK THEN

HOW IT ALL BEGAN

Obviously, the thought on everyone's mind at the start of the 1891 season was the move to the new 'Castle Grim' ground, since known as Kingsholm.

The whole thing is a considerable saga. Perhaps the first signs of discontent arose as early as 1878, when following an unfortunate incident with four electric floodlights — yes, they were experimenting with them as early as that — the City Corporation banned the game from the Spa ground. Although a petition of some 3,000 names changed the City Fathers' mind, relationships with the Gloucester Cricket Club seem to have been permanently soured, and indeed, there was a period when the same man held the Secretaryships of both Cricket and Rugby Clubs, and was forced to write a whole series of increasingly acrimonious letters to himself.

Then during a frosty spell in 1890, the Rugby boys got a little over-enthusiastic with the salt, and killed off

most of the grass on the Spa. That did it. They were requested to pack up and leave, although there is some evidence to suggest that they were looking for a new ground anyway.

The time came, in July 1891, when a Special General Meeting of the Club was offered a choice of three grounds. One was in Theresa Street, one at Castle Grim, and one in Sheephouse Lane, which you and I know as Tuffley Avenue.

Theresa Street didn't seem to find much favour, but Sheephouse Lane was by far the cheapest of the three options, and had its supporters. In the end, Castle Grim got the vote because it wasn't so far out of town. It's nice to know, however, that Rugby is played — by Old Cryptians and Widden Old Boys — in Tuffley Avenue, and we all know about the Cricket Festival.

Just think. If the vote had gone the other way, you might have parked your car in the Oval tonight, and stopped off at the Avenue for a drink!

TAILPIECE

by
Peter Arnold

ELBOW ROOM

You can happily skip this page, if you like. It's simply an expansion of the old 'Tailpiece', where I was allowed — nay, encouraged — to natter on about anything and everything, just so long as it wasn't important. Having more room, I can now give an airing to rather more of the inconsequential and peripheral happenings that people tell me about, so if you have something which you think would raise a grin, or even an eyebrow, do give me a ring about it. Gloucester 380481. Or buy me a pint in the bar and I'll be even keener to print it.

END OF THEIR ROPE

Odd things do happen even in the close season. Mike O'Connell, landlord of Barton Street's 'Mollie Malones', and sometime prop for Cheltenham for which we forgive him, decided that it would be a Good Thing for his pub to run a Tug-o-War team. Don't ask my why. Their first match was against the 'Dean's Walk', and it turned out to be something of a disaster for the 'Mollies'. They got pulled out of sight, with the greatest of ease, on every single pull.

All was revealed later. 'Dean's Walk' had provided a solid wodge of lads from Spartans, and they'd turned up with studs in their boots. Still, the beer went down well, afterwards. I'm told the next pull was to be against the 'Prince Arthur', but at the time of writing it hadn't happened yet. The mind boggles.

LATE UNLAMENTED

I wonder how George Orwell, author of '1984' would have regarded the World Cup. He once wrote that the serious game has . . .

'... nothing to do with fair play. It is bound up with hatred, jealousy, boastfulness, disregard of all rules, and sadistic pleasure in witnessing violence: in other words, it is war minus the shooting'

He wrote that as long ago as 1945. Perhaps it's just as well he's no longer around.

TELLY ADDICTS

According to Terry Wogan, himself a good Rugby supporter, a recent BBC survey into what people do when watching the telly, revealed that, at any given time, as many as three million people may be making love in front of the set.

Perhaps it would be unfair to regard the information as a comment on the interest aroused by the programmes, but it does make one wonder about what's going to happen during ITV's World Cup coverage. Adds a whole new dimension to Rugby terminology:

Loose maul?

Up and Under?

Staying on your feet during the ruck?

BEST OF LUCK, IAN

Finally, it wouldn't be right to close the first Programme of the Season without wishing "all the best" to our new Captain, Ian Smith. He certainly believes in starting with a big one: this will be one of the most demanding seasons for years. If anyone can handle it, Ian will. Takes after his Dad.