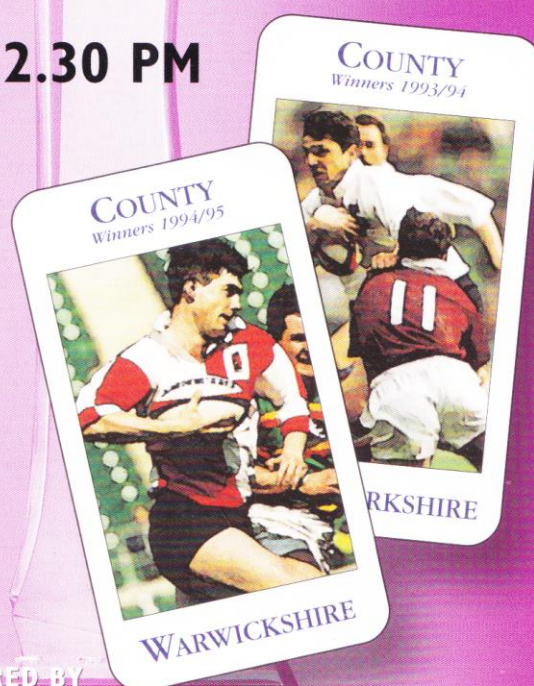


CIS INSURANCE COUNTY CHAMPIONSHIP

HERTFORDSHIRE V GLOUCESTERSHIRE

HERTFORD RFC
25 NOVEMBER 1995

KICK OFF 2.30 PM



SPONSORED BY

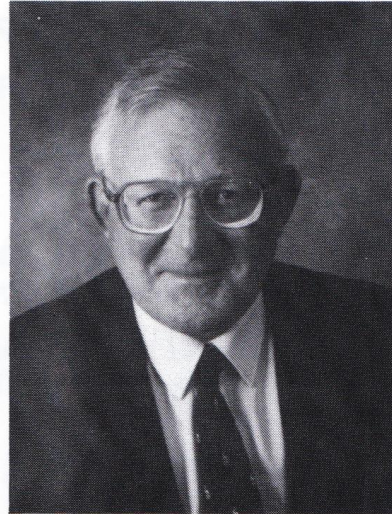


PRICE £3
INCLUDING
ADMISSION



Hertfordshire Rugby Football Union

Welcome to our Visitors – Gloucestershire Rugby Union



May I extend a very warm welcome to you all at Hertford RFC, especially to the President, the officers, players and supporters of the Gloucestershire Rugby Union, for today's opening match in the CIS County Championship.

To many of us, Gloucestershire is the hotbed of county rugby: indeed, in our first County Championship season in 1952-53 following granting of constituent body status, Gloucestershire were the winners of the Championship. The following season, we narrowly lost 8-9 to the champions. Since then, we have met on four further occasions although we have never been the victors – in fact, that result, 32 years ago, was the closest we have ever achieved. Perhaps in our Diamond Jubilee season, we shall achieve our first success, particularly as this is the third home attempt at such illustrious opposition.

The successful way in which the London and South East Division have merged with the South and South West Division to create four groups, the winners of which go forward to the quarter finals, has been impressive in just two seasons. I hope the North and Midlands Divisions can join up in a similar partnership.

Hertfordshire rugby is currently undergoing a renaissance, rugby wise: our Colts meet Cheshire tomorrow at Castlecroft in the Sun Alliance Colts County Championship semi finals (1pm) whilst the Under 21s travel to Chichester RFC to take on Sussex in their CIS County Championship group (2.15pm). I would like to wish all three representative sides every success this weekend.

Today's match referee is no stranger to Hertford – over the years, he has been a regular official in various competitions here although I know he will be impartial in every sense. To him, and his two touch judges, I offer you my thanks and appreciation, in advance, of what we all hope is a great game of rugby for players, officials and supporters alike.

To Tony and his helpers in the Hertford Club, a very big thank you for your hospitality, good food, wines, beers and, of course, to your support of Hertfordshire.

It is very pleasing to welcome our guests from the Harlow office of CIS Insurance and to thank you, and your parent company, for county rugby support. Thank you.

Ladies and Gentlemen: let rugby union and its many friendships thrive today.

GEORGE THOMPSON
President, Hertfordshire RFU

1995-1996 CIS County Championship
Saturday 25th November 1995 kick off 2.30 p.m.

Hertfordshire
(Green Shirts and White Shorts)

- 15 Paul Hughes (Saracens)
- 14 Andy Phillips (Saracens)
- 13 Ian Parkhouse (Letchworth)
- 12 Gordon Waddell (B. Stortford)
- 11 Daryl Chapman (Old Albanians)
- 10 Ben Rudling (Cheshunt)
- 9 Paul Woodford (B. Stortford)
- 1 Russell Welsh (Tabard)
- 2 Bill Norton (O. Elizabethans)
- 3 Darren Spillane (Letchworth)
- 4 Graham Brown (Fullerians)
- 5 David Brain (Saracens)
- 6 Floyd Caesar (Letchworth)
- 7 Andy McPherson (Saracens)
- 8 Ian Holman (Hertford) (Captain)

Replacements

- 16 Richard Thomas (O. Albanians)
- 17 Clive Mann (Hertford)
- 18 David Ridler (Fullerians)
- 19 Gareth Tanner (O. Verulamians)

REFEREE
Mr R. Meerloo
 (London Society)

Gloucestershire
(Red shirts and White shorts)

- 15 Tim Smith (Gloucester)
- 14 Derrick Morgan (Cheltenham)
- 13 Duncan Edwards (Berry Hill)
- 12 Ralph Knibbs (Bristol)
- 11 Jerry Perrins (Gloucester)
- 10 Robert Mills (Lydney)
- 9 Giles Shipton (Stroud)
- 1 Robert Phillips (Cheltenham)
- 2 Nick Nelmes (Lydney)
- 3 Simon Baldwin (Gloucester Old Boys)
- 4 Tim Clink (Cheltenham)
- 5 Peter Miles (Gloucester)
- 6 Adrian Knox (Lydney)
- 7 Andrew Stanley (Gloucester) (Captain)
- 8 Robert Rees (Lydney)

Replacements

- 16 Phil Stanlake (Cheltenham)
- 17 Ian Morgan (Cinderford)
- 18 Dave Kearsley (Berry Hill)
- 19 Karl Kocheran (Berry Hill)

TOUCH JUDGES
Mr T. Aston and Mr R. Evison
 (RFU)

- | |
|----------------|
| 15 – full back |
| 14 – wing |
| 13 – centre |
| 12 – centre |
| 11 – wing |
| 10 – fly half |
| 9 – scrum half |
| 1 – prop |
| 2 – hooker |
| 3 – prop |
| 4 – lock |
| 5 – lock |
| 6 – flanker |
| 7 – flanker |
| 8 – number 8 |